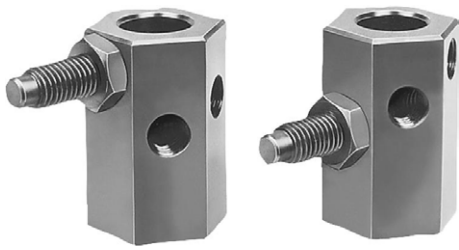


BUTEE REGLABLE

K.0813

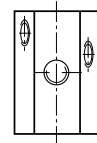
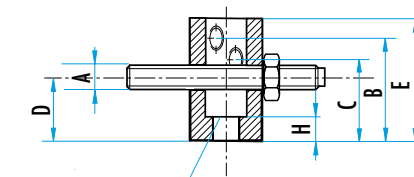
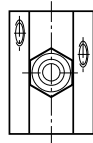
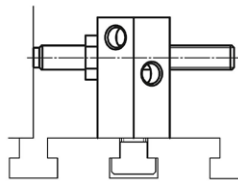


MATIERE : toutes les pièces sont en acier traité, bruni.

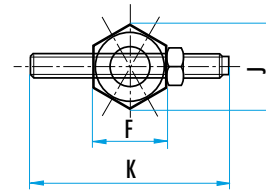
REMARQUE : cette butée est munie de 3 trous taraudés pour recevoir la vis.

A	B	C	D	E	F	G (*)	H	J	K	Ref.
M8	32	25	20	40	21	M8	7	24,3	50	K.0813.08.032
M12	50	40	32	60	36	M12	12	41,6	100	K.0813.12.050
M16	63	50	40	80	46	M16	16	53,1	100	K.0813.16.063

G (*) : taraudage traversant pour DIN 912



G pour DIN 912



VIS - BUTEE REGLABLE

K.0820



MATIERE : acier traité, bruni.

A	B	C	D	E	F	Ref.
30	44	37	30	10	M6	K.0820.06
40	56	48	40	13	M8	K.0820.08
50	70	60	50	17	M10	K.0820.10
60	84	72	60	19	M12	K.0820.12
80	112	96	80	24	M16	K.0820.16

