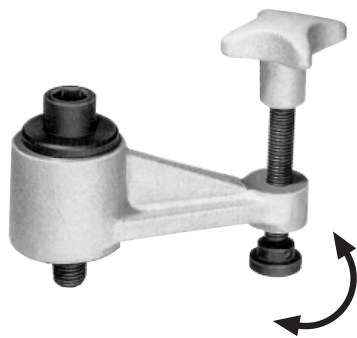


DISPOSITIF DE BRIDAGE AMOVIBLE

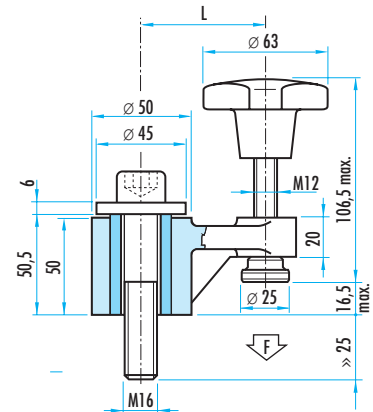
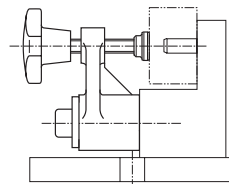
K.0019



MATIERE ET EXECUTION :

corps en fonte, laqué, boulon en acier Ck 35, pièce intérieure en acier Ck 45, patin en acier Ck 10, trempé, bouton en fonte.

| L (mm) | force F (daN) | Ref. |
|--------|---------------|------------------|
| 63 | 500 | K.0019.01 |
| 100 | 300 | K.0019.02 |



DISPOSITIF DE BRIDAGE AMOVIBLE

Ref. WWN.656



A

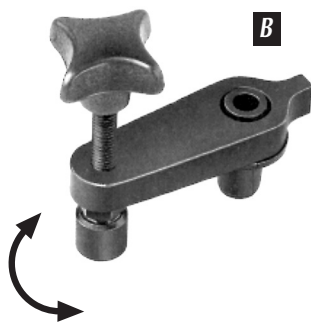
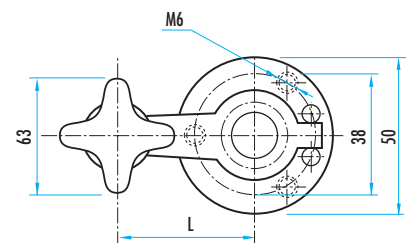
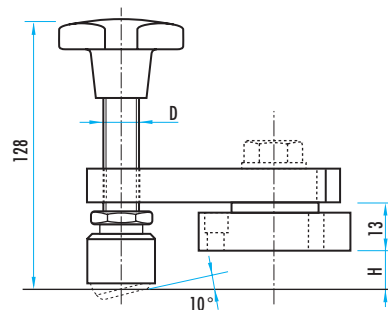
MATIERE : acier noirci, bouton en fonte.

EXECUTION :

A : avec bride de fixation.

B : avec entretoise pour vis de fixation.

| D | L | H min/max | Ref. |
|------|-----|-----------|--------------------|
| M 12 | 65 | 12 - 61 | WWN.656.210 |
| M 12 | 90 | 12 - 61 | WWN.656.212 |
| M 12 | 115 | 12 - 61 | WWN.656.214 |



B

| D | L | H min/max | Ø D1 | Ø D2 e9 | Ø D3 | H1 | H2 | Ref. |
|------|----|-----------|------|---------|------|----|-----|--------------------|
| M 6 | 40 | 17 - 37 | 32 | 11 | 6,5 | 16 | 70 | WWN.656.201 |
| M 12 | 65 | 22 - 71 | 63 | 16 | 10,5 | 20 | 128 | WWN.656.203 |

