

**MANETTE INDEXABLE EN ACIER**

**K.0120**

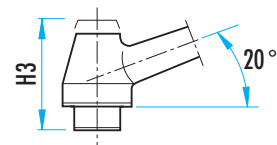
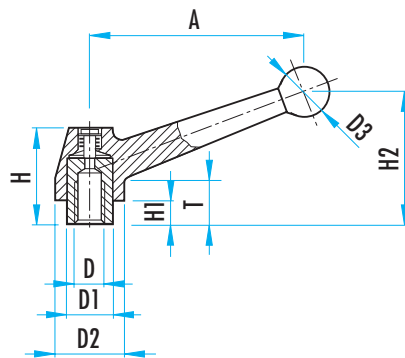
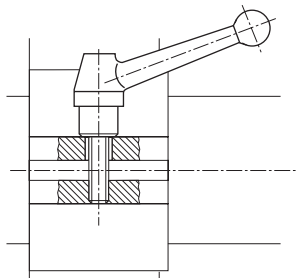


**MATIERE ET EXECUTION :**

pièces intérieures en acier 9 S Mn Pb 28 K, bruni  
manette en acier C 35, forgé et peint en gris argent.  
Indexation en tirant le levier vers le haut.

**BAGUE TARAUDÉE**

D	T	Ø D1	Ø D2	Ø D3	H	H1	H2	H3	A	Réf.
M8	17	19	28	20	44	12	54	49	83	<b>K.0120.108</b>
M10	17	19	28	20	44	12	54	49	83	<b>K.0120.110</b>
M12	17	19	28	20	44	12	54	49	83	<b>K.0120.112</b>
M12	23	23	35	25	50	12	69	56	108	<b>K.0120.212</b>
M16	23	23	35	25	50	12	69	56	108	<b>K.0120.216</b>
M16	27	30	43	30	58,5	12	78	65	132	<b>K.0120.316</b>
M20	27	30	43	30	58,5	12	78	65	132	<b>K.0120.320</b>

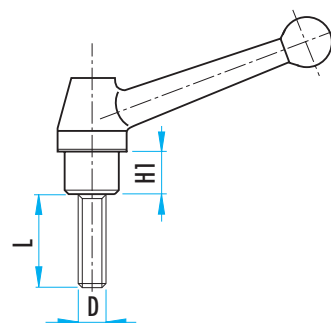


**TIGE FILETÉE**

D	L	Réf.
M10 M12	20 - 25 - 30 - 35 - 40 - 45 - 50 - 55 - 60 - 70 - 80 - 90	<b>K.0120.110...</b> <b>K.0120.112...</b>
M12 M16	25 - 30 - 35 - 40 - 45 - 50 - 55 - 60 - 70 - 80 - 90	<b>K.0120.212...</b> <b>K.0120.216...</b>
M16 M20	30 - 40 - 50 - 60 - 70 - 80 - 90	<b>K.0120.316...</b> <b>K.0120.320...</b>



Voir autres cotes ci-dessus.



**POUR LA COMMANDE :**

Réf. K.0120.110 , L = 35 = Réf. **K.0120.110.35**

**MANETTE INDEXABLE EN INOX**

K.0121



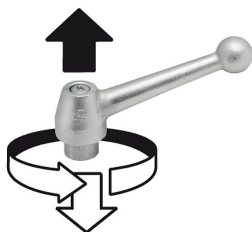
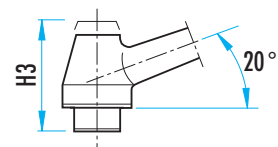
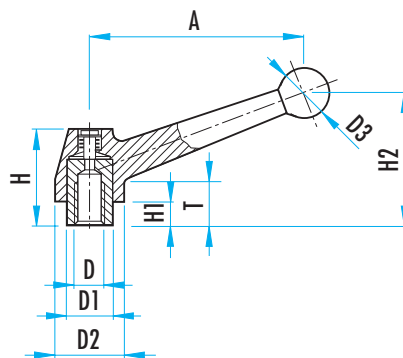
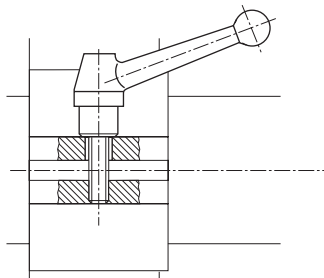
**MATIERE ET EXECUTION :**

pièces intérieures en INOX 1.4305  
manette en INOX 1.4308 avec polissage électrolytique.  
Indexation en tirant le levier vers le haut.



**BAGUE TARAUDÉE**

D	T	Ø D1	Ø D2	Ø D3	H	H1	H2	H3	A	Réf.
M8	17	19	28	20	41	12	54	49	83	K.0121.1108
M10	17	19	28	20	41	12	54	49	83	K.0121.1110
M12	17	19	28	20	41	12	54	49	83	K.0121.1112

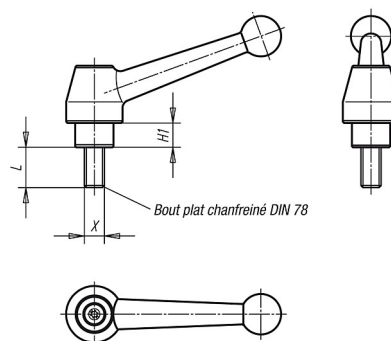


**TIGE FILETÉE**

D	L	Réf.
M10	25 - 30 - 40 - 50 - 60	K.0121.1110...
M12		K.0121.1112...



Voir autres cotes ci-dessus.



**POUR LA COMMANDE :**

Réf. K.0121.1110 , L = 40 = Ref. K.0121.1110.40