

**CROCHET PESEUR**

Art. MW.



Art. MW.120...

Art. MW.024...

Pour la détermination du poids d'une charge suspendue.  
Le centre de gravité de la charge doit pendre librement verticalement.

Art. MW.120 et 24

Corps en acier avec plexiglas de protection et fond blanc.

Autres modèles sur demande :

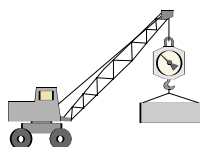
modèle MW.20 même que MW.120 sans protection plexiglas, moins cher,

modèle MW.042 de 50 - 1500 à 1000 - 25000 kg,

- modèle MW.120.E
- avec indication digitale,
  - de 0 - 2 kg à 0 - 500 kg,
  - nettement plus cher que le modèle MW.120.



Art. MW.120.E...



plage de mesure (kg)	division (kg)	hauteur tot. (mm)	Art.
0 - 5	0,02	350	MW.120.005
0 - 10	0,10	350	MW.120.010
0 - 20	0,10	350	MW.120.020
0 - 25	0,10	350	MW.120.025
0 - 50	0,20	350	MW.120.050
0 - 100	0,50	350	MW.120.100
0 - 150	1	430	MW.120.150
0 - 200	1	430	MW.120.200
0 - 300	2	430	MW.120.300
0 - 300	2	560	MW.024.0300
0 - 500	2	560	MW.024.0500
0 - 750	5	560	MW.024.0750
0 - 1000	5	560	MW.024.1000

**DYNAMOMETRE**

Art. MW.



Art. MW.022...



Art. MW.025...

Pour la mesure de traction. Lors de la mesure de la force, les deux côtés du dynamomètre doivent être activés.

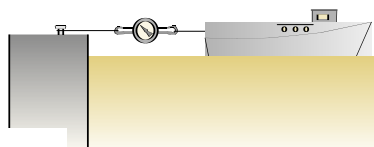
La direction peut être verticale, horizontale ou diagonale.

Type MW.022 : dynamomètre cylindrique

Type MW.025 : dynamomètre à cadran

plage de mesure (daN)	division (N)	hauteur H.T. (mm)	Art.
0 - 0,1	0,01	340	MW.022.001
0 - 0,2	0,02	340	MW.022.002
0 - 0,5	0,05	340	MW.022.005
0 - 1	0,1	340	MW.022.010
0 - 2,5	0,25	340	MW.022.025
0 - 5	0,5	346	MW.022.050
0 - 10	2	306	MW.022.100
0 - 20	4	322	MW.022.200
0 - 30	5	362	MW.022.300
0 - 60	10	423	MW.022.600
0 - 100	20	443	MW.022.1000

plage de mesure (daN)	division (N)	hauteur H.T. (mm)	Art.
0 - 5	0,2	290	MW.025.005
0 - 10	0,5	290	MW.025.010
0 - 20	1	290	MW.025.020
0 - 25	1	290	MW.025.025
0 - 50	2	290	MW.025.050
0 - 100	5	290	MW.025.100
0 - 150	10	380	MW.025.150
0 - 200	10	380	MW.025.200
0 - 300	20	380	MW.025.300



**CROCHET PESEUR**

**KERN MH•CH**  
Hanging scale

*Practical and  
always at hand*

STANDARD



STANDARD



**KERN MH**

**KERN CH**

Hand strap

**Data hold function**  
the display is "frozen" automatically for approx. 7 sec as soon as the weighing value remains unchanged

**Data hold function**  
the display can be "frozen" for 5 sec by pressing the HOLD-key

**Tape measure**  
extractable,  
(length 100 cm)

**Hook**  
stainless steel,  
can be hinged

**Hook**  
stainless steel

**Ready for use**  
batteries size AA (2x 1,5 V) included. AUTO-OFF function after 5 min without a change of load to preserve the battery. Operating time approx. 250 h

**Ready for use**  
block-battery (9 V) included. AUTO-OFF function after 3 min without a change of load to preserve the battery

**Order example 3-Pack: KERN MH 5K5 -S3**

**Order example 3-Pack: KERN CH 15K20 -S3**

Model	Read-out d	Weighing range Max
KERN	g	kg
MH 5K5	5	5
MH 10K10	10	10

Model	Read-out d	Weighing range Max
KERN	g	kg
CH 15K20	20	15
CH 50K50	50	50
CH 50K100	100	50

Casing WxDxH 70x25x100 mm (with hook 140 mm).  
Net weight approx. 150 g.  
LCD display, 12 mm digit height.  
Temperature display -10 ... +40°C, division 1°C.

Casing WxDxH 90x30x175 mm (with hook 270 mm).  
Net weight approx. 250 g.  
LCD display, 12 mm digit height.

**CROCHET PESEUR**

**KERN MH-CH**

**Accessories:**



**Angle bracket,**  
KERN CH-A03

**Strap,** length 375 mm,  
width 35 mm,  
KERN CH-A04



**Pan beam,** approx. 400 g,  
beam height 390 mm,  
KERN CH-A02

**Tare pan,** approx. 300 g,  
Ø 290 mm x 45 mm,  
KERN CH-A01

**Snap link**  
stainless steel, standard,  
with safety catch, aperture  
15 mm.  
Can be reordered any time,  
KERN HCB-A01

 **Adjustment program**  
**CAL**  
external test weights  
additional price

**Data hold function**  
the display can be "frozen"  
for 5 sec by pressing the  
HOLD-key


 **Ready for use**  
batteries size AA (3x 1,5 V)  
included. AUTO-OFF function  
after 3 min without a change  
of load to preserve the  
battery. Operating time  
approx. 300 h

**S-hook**  
stainless steel, standard,  
aperture approx. 25 mm.  
Can be reordered any time,  
HCB-A02



STANDARD



 *New models*

Model	Read-out d g	Weighing range Max kg	OPTION
			Certificate <b>DKD</b>
<b>KERN</b>			<b>KERN</b>
HCB 20K50	50	20	963-128
HCB 50K100	100	50	963-128
HCB 100K200	200	100	963-129
HCB 200K500	500	200	963-129
<b>Fine range</b>			
HCB 20K10	 10	20	963-128
HCB 50K20	 20	50	963-128
HCB 99K50	 50	99	963-129
HCB 200K100	 100	200	963-129

Casing WxDxH 80x45x150 mm. Net weight approx. 400 g.  
total height with snap link and S-hook 290 mm.  
LCD display, digit height 12 mm.



**CROCHET PESEUR**

**KERN HUS**  
Crane scale

The compact one -  
up to 600 kg

STANDARD



**Loop**  
steel, nickel-plated. Aperture  
approx. 24 mm wide

Price reduction 😊

**Back-lit LCD display**  
digit height  
23 mm

**Adjustment program CAL**  
external test weights  
additional price

**Integrated rechargeable battery pack**  
standard, operating time  
approx. 120 h. Charging  
time approx. 8 h with mains  
adapter



**Infrared remote control**  
standard.  
Range approx. 2,5 m.  
All functions are  
selectable. WxDxH  
120x60x15 mm

**Ready for use**  
batteries size AAA  
(2x 1,5 V) included



**Tried and tested**  
up to 1.3 times the  
weighing range **Max**



**Tare:**  
put back displayed value to  
"0" during weighing process.  
Now removed or added  
loads are directly displayed

**Data hold function**  
the display is "frozen" via  
the HOLD-key until any key  
is pressed again

**Casing**  
WxDxH 150x140x155mm,  
total height from loop to  
hook 360 mm  
(HUS 600: 380 mm)

**Charge display**  
for integrated rechargeable  
battery pack visual via LED

**Hook**  
with safety catch. Steel,  
nickel-plated, turnable.  
Aperture approx. 20 mm  
(HUS 600 ca. 24 mm)



Model	Read-out d g	Weighing range Max kg	OPTION Certificate <b>DKD</b>
KERN			KERN
HUS 60K 20	20	60	963-129
HUS 150K 50	50	150	963-129
HUS 300K 100	100	300	963-129
HUS 600K 200	200	600	963-130

Precision 0.2% of **Max**. Net weight approx. 4 kg.  
Permissible humidity: max 85%, not condensing.



**CROCHET PESEUR**

The industrial one –  
up to 3.000 kg

**KERN HUM**  
Crane scale

Delivery  
1 day

3  
years  
Warranty

OPTION  
**DKD**  
Certificate  
+5 days



Tried and tested  
up to 1.3 times the  
weighing range **Max**

Price reduction

STANDARD



**Tare:**  
put back displayed value to  
"0" during weighing process.  
Now removed or added  
loads are directly displayed

Metal casing

luminescent  
**LED-display**  
25 mm digit height

**Data hold function**  
the display is "frozen" via  
the HOLD-key until any key  
is pressed again

**Integrated  
rechargeable  
battery pack**

standard, operating time  
approx. 80 h. Charging time  
approx. 8 h with mains  
adapter. Selectable: AUTO-  
OFF function after 4 min  
without a change of load or  
continuous operation

**Radio  
remote control**  
standard. Range approx.  
25 m. All functions (excl. ON/OFF)  
can be selected.  
WxDxH 65x40x15 mm

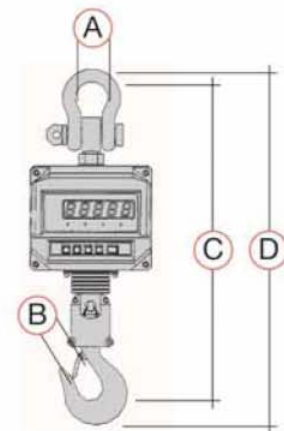


Ready for use  
battery (23A, 12V)  
included

Hook with  
safety catch,  
turnable



**Adjustment program  
CAL**  
external test weights  
additional price



Model	Read-out d g	Weighing range Max kg	Net weight approx. kg	Casing WxDxH mm	Dimensions				OPTION alternative Certificate <b>DKD</b> for balances, <b>KERN</b>
					A	B	C	D	
KERN HUM 1000K500	500	1000	17	210x228x180	56	42	550	620	● 963-130
KERN HUM 3000K1000	1000	3000	18	210x228x180	73	45	580	650	● -

Precision 0.2% of Max. Permissible humidity: max 85%, not condensing.

**CROCHET PESEUR**

**KERN HTS**  
Crane scale

Industrial crane weigher up to 10 t,  
IP 65, numerous memory locations

**STANDARD**



see p. 67

**Further functions**

- 10 tare memory possibilities
- 10 unassigned memory possibilities, e.g. for weight increments or identification numbers
- Summation storage, adds up all individual weighing processes
- Tolerance range weighing (Check weighing), s. page 42
- Peak-load display (Peak-hold)

**Luminescent LED display**

the luminosity can be adjusted in 2 stages to preserve the rechargeable battery pack. Digit height for models with Max ≤ 1.500 kg: 25 mm, Max ≥ 3.000 kg: 30 mm

**Standby function**

automatic switch off of the display after 5 min without a change of load. Automatic activation with any touch of a key

**Radio remote control**

standard. Working range approx. 15 m. All functions can be called. Input via numeric keyboard, incl. protective case, WxDxH 200x80x28 mm

**Rechargeable battery pack**

internal, standard, operating time approx. 150 h, charging time approx. 15 h. For models with Max ≤ 1.500 kg internal, through mains adapter. Can be reordered any time, **KERN HTS-A01**

For models with Max ≥ 3.000 kg external, through battery charger. Can be reordered any time, **KERN HTS-A02**



**Ready for use**  
Battery (23 A, 12 V) included



Delivery 8 days

3 years Warranty

**Metal casing**

**OPTION**

**M** Verification

on request

**DKD** Certificate +5 days

**Adjustment program CAL**  
test weights available additional price

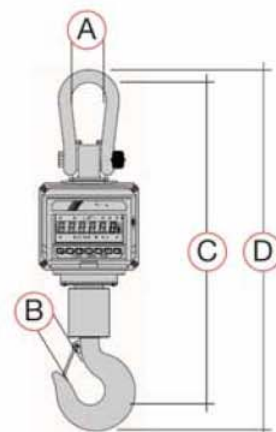
**Charging condition indicator** for rechargeable battery, visual by means of LED

**Display net/gross/tare** by means of LEDs

**Data hold function** the display is "frozen" via a double touch of a key until the "C" key is pressed



**Bracket** with safety catch, rotatable



Model	Read-out <b>d</b> g	Weighing range <b>Max</b> kg	Net weight kg	Casing WxDxH mm	Dimensions				OPTION alternative Verification <b>M</b> (on demand) <b>KERN</b>	Certificate for balances, <b>DKD</b> <b>KERN</b>
					A	B	C	D		
KERN HTS 150K50 IP	50	150	13	200x204x160	45	30	435	480	-	963-129
KERN HTS 300K100 IP	100	300	13	200x204x160	45	30	435	480	-	963-129
KERN HTS 600K200 IP	200	600	13	200x204x160	45	30	435	480	-	963-130
KERN HTS 1.5T0.5 IP	500	1500	13	200x204x160	60	28	443	505	-	-
KERN HTS 3T1 IP	1000	3000	15	279x254x381	90	45	735	815	-	-
KERN HTS 6T2 IP	2000	6000	45	279x254x381	90	45	735	815	-	-
KERN HTS 10T5 IP	5000	10000	45	279x254x381	100	67	900	1040	-	-