

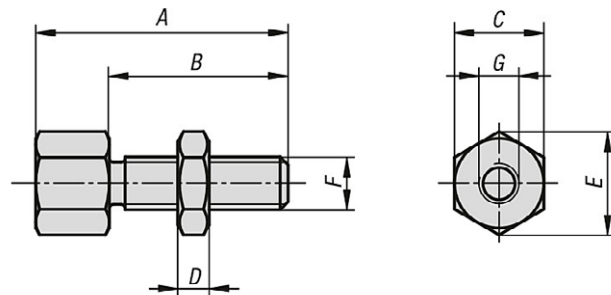
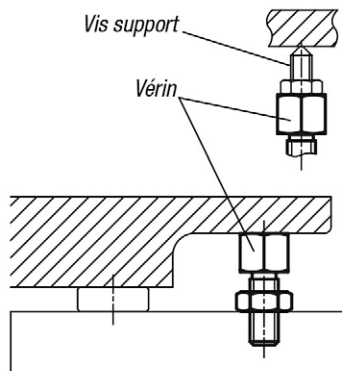
## SUPPORT

**K.0308**

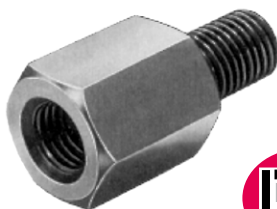
**MATIERE** : acier bruni.

| A  | B  | C  | D  | E    | F   | G        | poids (g) | Ref.           |
|----|----|----|----|------|-----|----------|-----------|----------------|
| 30 | 20 | 13 | 5  | 14,4 | M8  | M6 x 6   | 20        | K.0308.0803006 |
| 40 | 30 | 13 | 5  | 14,4 | M8  | M6 x 6   | 25        | K.0308.0804006 |
| 38 | 24 | 17 | 6  | 18,9 | M10 | M8 x 8   | 45        | K.0308.1003808 |
| 48 | 34 | 17 | 6  | 18,9 | M10 | M8 x 8   | 50        | K.0308.1004808 |
| 51 | 33 | 22 | 7  | 24,5 | M12 | M10 x 10 | 95        | K.0308.1205110 |
| 66 | 48 | 22 | 7  | 24,5 | M12 | M10 x 10 | 110       | K.0308.1206610 |
| 62 | 40 | 27 | 10 | 30,1 | M16 | M12 x 12 | 185       | K.0308.1606212 |
| 77 | 55 | 27 | 10 | 30,1 | M16 | M12 x 12 | 210       | K.0308.1607712 |

Appui réglable sur lequel différents éléments peuvent être montés.

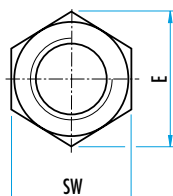
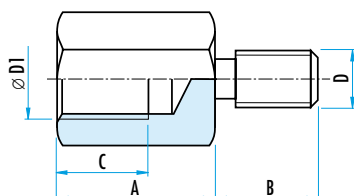


## RALLONGE

**KWN.2035**

**MATIERE** : acier traité, bruni.

**REMARQUE** : ces pièces sont utilisées pour rallonger des pièces pendulaires, des poussoirs à ressort, des pieds de positionnement, des vis-support, etc...

Sur demande : M6 - M8 et M8 - M6 en INOX.



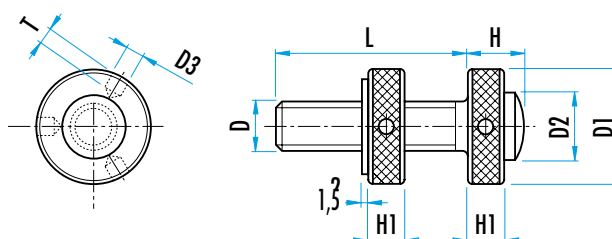
| A  | B  | C  | D   | D1  | E    | SW | poids (kg) | Ref.           |
|----|----|----|-----|-----|------|----|------------|----------------|
| 25 | 13 | 15 | M8  | M8  | 15   | 13 | 0,035      | KWN.2035.08025 |
| 32 | 13 | 15 | M8  | M8  | 15   | 13 | 0,043      | KWN.2035.08032 |
| 40 | 13 | 15 | M8  | M8  | 15   | 13 | 0,051      | KWN.2035.08040 |
| 25 | 15 | 17 | M10 | M10 | 19,6 | 17 | 0,056      | KWN.2035.10025 |
| 32 | 15 | 17 | M10 | M10 | 19,6 | 17 | 0,065      | KWN.2035.10032 |
| 40 | 15 | 17 | M10 | M10 | 19,6 | 17 | 0,085      | KWN.2035.10040 |
| 32 | 18 | 20 | M12 | M12 | 25,4 | 22 | 0,095      | KWN.2035.12032 |
| 50 | 18 | 20 | M12 | M12 | 25,4 | 22 | 0,165      | KWN.2035.12050 |
| 75 | 18 | 20 | M12 | M12 | 25,4 | 22 | 0,250      | KWN.2035.12075 |
| 32 | 25 | 20 | M16 | M16 | 31,2 | 27 | 0,150      | KWN.2035.16032 |
| 50 | 25 | 30 | M16 | M16 | 31,2 | 27 | 0,250      | KWN.2035.16050 |
| 75 | 25 | 30 | M16 | M16 | 31,2 | 27 | 0,370      | KWN.2035.16075 |

## VIS DE REGLAGE EN HAUTEUR

**WWN.631**


**MATIERE** : acier trempé et bruni.  
Sur demande : dimensions en pouces.

| D   | L   | Ø D1 | Ø D2 | Ø D3 | H  | H1 | T   | Ref.         |
|-----|-----|------|------|------|----|----|-----|--------------|
| M6  | 40  | 20   | 12   | 3,2  | 10 | 6  | 4,5 | WWN.631.2006 |
| M8  | 45  | 22   | 14   | 3,2  | 12 | 7  | 5   | WWN.631.2008 |
| M10 | 50  | 25   | 16   | 5,2  | 14 | 8  | 5   | WWN.631.2009 |
| M12 | 60  | 32   | 20   | 6,2  | 16 | 10 | 7   | WWN.631.2010 |
| M16 | 70  | 38   | 25   | 6,2  | 20 | 12 | 7   | WWN.631.2020 |
| M20 | 80  | 45   | 32   | 8,2  | 22 | 16 | 7,5 | WWN.631.2030 |
| M24 | 100 | 50   | 38   | 8,2  | 28 | 22 | 7,5 | WWN.631.2040 |

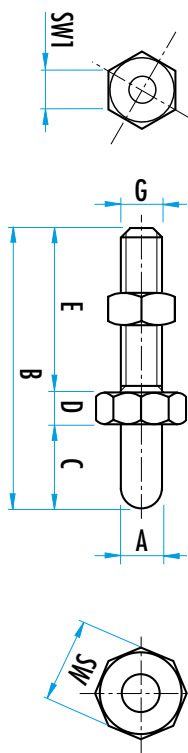


## GOUJON - SUPPORT

**K.0297**


**MATIERE** : acier traité et bruni.

**REMARQUE** : la forme arrondie permet d'utiliser ces goujons également comme éléments de positionnement pour des pièces munies d'alésages.



| A  | B   | C  | D  | E  | G   | SW | SW1 | Ref.         |
|----|-----|----|----|----|-----|----|-----|--------------|
| 6  | 37  | 6  | 6  | 25 | M6  | 13 | 10  | K.0297.06006 |
| 6  | 43  | 12 | 6  | 25 | M6  | 13 | 10  | K.0297.06012 |
| 8  | 45  | 8  | 7  | 30 | M8  | 13 | 13  | K.0297.08008 |
| 8  | 53  | 16 | 7  | 30 | M8  | 13 | 13  | K.0297.08016 |
| 10 | 58  | 10 | 8  | 40 | M10 | 17 | 17  | K.0297.10010 |
| 10 | 68  | 20 | 8  | 40 | M10 | 17 | 17  | K.0297.10020 |
| 12 | 72  | 12 | 10 | 50 | M12 | 19 | 19  | K.0297.12012 |
| 12 | 84  | 24 | 10 | 50 | M12 | 19 | 19  | K.0297.12024 |
| 16 | 89  | 16 | 13 | 60 | M16 | 24 | 24  | K.0297.16016 |
| 16 | 105 | 32 | 13 | 60 | M16 | 24 | 24  | K.0297.16032 |
| 20 | 115 | 20 | 15 | 80 | M20 | 36 | 30  | K.0297.20020 |
| 20 | 135 | 40 | 15 | 80 | M20 | 36 | 30  | K.0297.20040 |

## VIS DE REGLAGE EN ACIER

H.22690



### MATIERE ET EXECUTION :

Vis en acier traité 10.9, noirci

Ecrou en acier 8.8, noirci.

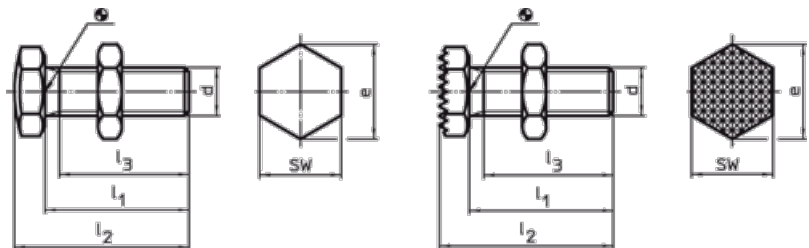
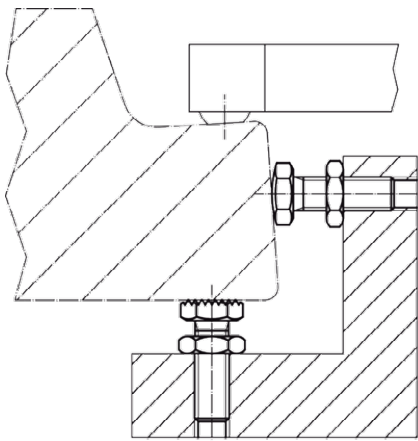
- Ref. H.22690.0606 à 0612 = surface bombée.

- Ref. H.22690.0626 à 0632 = surface striée

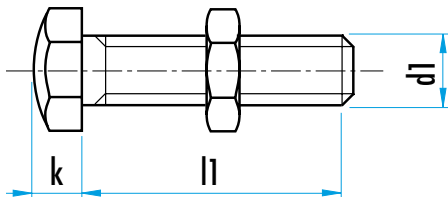
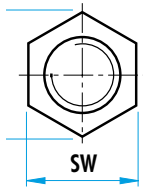
### REMARQUE :

Sert comme appui ou butée.

| d   | l1<br>±1,5 | l2<br>±1,5 | l3<br>min. | e    | SW | Ref.         |              |
|-----|------------|------------|------------|------|----|--------------|--------------|
|     |            |            |            |      |    | bombé        | strié        |
| M6  | 20         | 23,5       | 19         | 11,5 | 10 | H.22690.0606 | H.22690.0626 |
| M8  | 25         | 30         | 21         | 14,5 | 13 | H.22690.0608 | H.22690.0628 |
| M10 | 30         | 36         | 25,5       | 19,6 | 17 | H.22690.0610 | H.22690.0630 |
| M12 | 35         | 42         | 29,7       | 29,7 | 19 | H.22690.0612 | H.22690.0632 |



## VIS DE REGLAGE EN HAUTEUR



### MATIERE ET EXECUTION :

**Ref. GWN.251** : en acier - qualité 5.8, bruni, tête hexagonale trempée,

**Ref. K.0307** : en laiton.

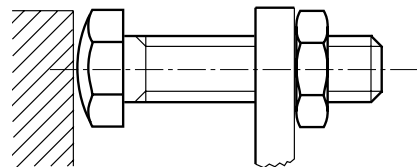
**REMARQUE** : Livré avec contre-écrou.

Sur demande : • élément semblable en M 4, M5 et M20

• dimensions en pouce (Ref. WWN.610).

• avec contact électrique 24V, fin de course.

| d1  | l1 | sw | k   | Ref.           |
|-----|----|----|-----|----------------|
| M6  | 30 | 10 | 4   | GWN.251.06.030 |
| M6  | 40 | 10 | 4   | GWN.251.06.040 |
| M6  | 50 | 10 | 4   | GWN.251.06.050 |
| M8  | 30 | 13 | 5,5 | GWN.251.08.030 |
| M8  | 40 | 13 | 5,5 | GWN.251.08.040 |
| M8  | 50 | 13 | 5,5 | GWN.251.08.050 |
| M10 | 40 | 17 | 7   | GWN.251.10.040 |
| M10 | 50 | 17 | 7   | GWN.251.10.050 |
| M10 | 60 | 17 | 7   | GWN.251.10.060 |
| M10 | 70 | 17 | 7   | GWN.251.10.070 |
| M12 | 40 | 19 | 10  | K.0307.12.040  |
| M12 | 40 | 19 | 8   | GWN.251.12.040 |
| M12 | 50 | 19 | 8   | GWN.251.12.050 |
| M12 | 60 | 19 | 8   | GWN.251.12.060 |
| M12 | 70 | 19 | 8   | GWN.251.12.070 |
| M16 | 45 | 24 | 10  | K.0307.16.045  |
| M16 | 50 | 24 | 10  | GWN.251.16.050 |
| M16 | 60 | 24 | 10  | GWN.251.16.060 |
| M16 | 70 | 24 | 10  | GWN.251.16.070 |
| M16 | 80 | 24 | 10  | GWN.251.16.080 |



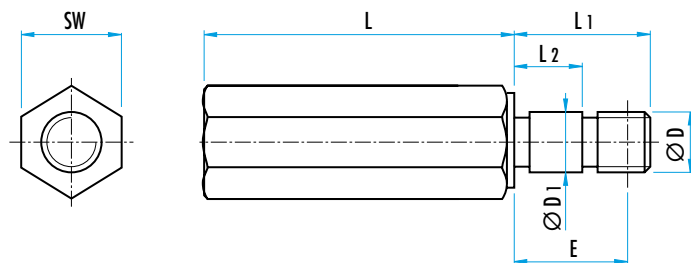
## PIED SUPPORT POUR CALIBRE AVEC FILETAGE

**WWN.626**


**MATIERE** : acier.  
**EXECUTION** : pied trempé et bruni.

| D   | E (*) |      | L+0,13<br>+025 | D1<br>Ø | L1 | L2   | SW | poids<br>(g) | Ref.            |
|-----|-------|------|----------------|---------|----|------|----|--------------|-----------------|
|     | min.  | max. |                |         |    |      |    |              |                 |
| M10 | 13    | 19   | 50             | 10      | 28 | 11,5 | 17 | 120          | WWN.626.201.050 |
|     |       |      | 75             |         |    |      |    | 178          | WWN.626.201.075 |
|     |       |      | 100            |         |    |      |    | 232          | WWN.626.201.100 |
| M12 | 19    | 25   | 50             | 12      | 35 | 18   | 22 | 209          | WWN.626.202.050 |
|     |       |      | 75             |         |    |      |    | 311          | WWN.626.202.075 |
|     |       |      | 100            |         |    |      |    | 419          | WWN.626.202.100 |
|     |       |      | 125            |         |    |      |    | 526          | WWN.626.202.125 |

(\*) épaisseur plaque



## PIED SUPPORT POUR CALIBRE AVEC TARAUDAGE

**WWN.627**


**MATIERE** : acier.  
**EXECUTION** : pied trempé et bruni.

| D   | L  | SW | T  | poids (g) | Ref.           |
|-----|----|----|----|-----------|----------------|
| M10 | 30 | 17 | 17 | 80        | WWN.627.201.30 |
|     | 60 |    |    | 150       | WWN.627.201.60 |
| M12 | 30 | 22 | 17 | 180       | WWN.627.202.30 |
|     | 60 |    |    | 300       | WWN.627.202.60 |
|     | 90 |    |    | 400       | WWN.627.202.90 |

