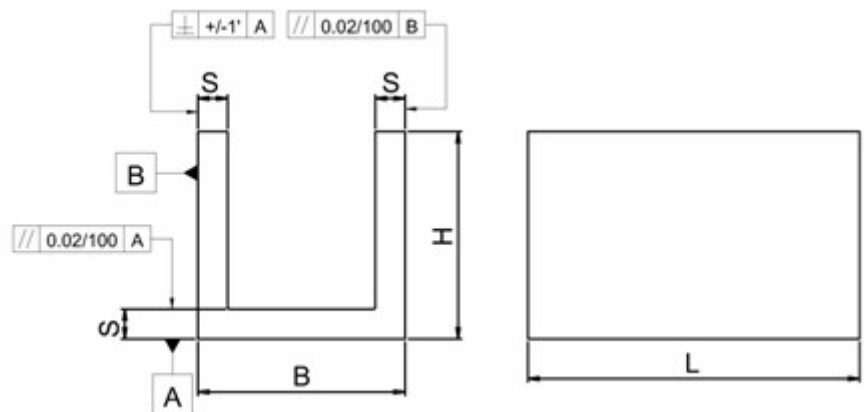
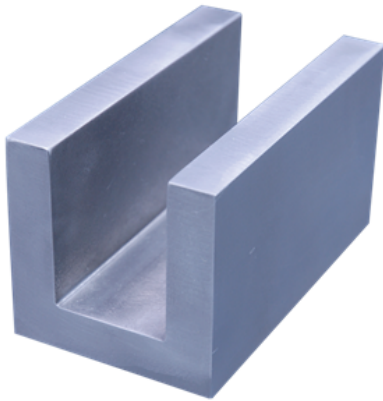


PROFIL EN "U" EN FONTE

WWW.911

MATIERE : fonte EN 1561

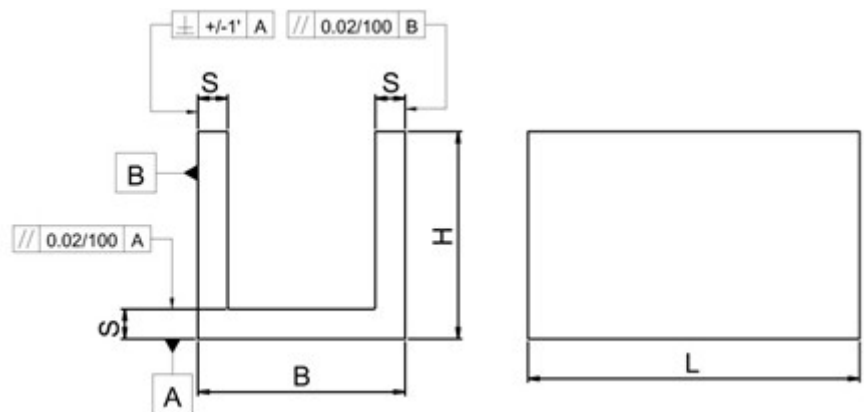
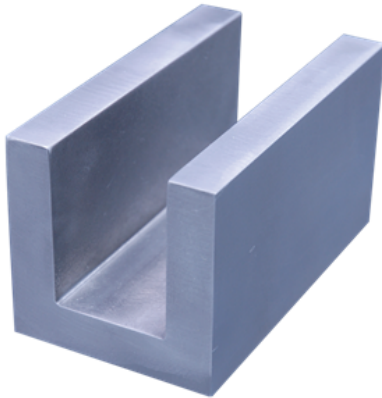


B	H	S	L	poids (kg)	Ref.
50	50	12	100	1,1	WWN.911.401.0100
50	50	12	200	2,2	WWN.911.401.0200
50	50	12	300	3,3	WWN.911.401.0300
50	50	12	400	4,4	WWN.911.401.0400
50	50	12	500	5,4	WWN.911.401.0500
50	50	12	600	6,6	WWN.911.401.0600
50	50	12	800	8,8	WWN.911.401.0800
50	50	12	1000	11	WWN.911.401.1000
63	63	14	100	1,6	WWN.911.402.0100
63	63	14	200	3,2	WWN.911.402.0200
63	63	14	300	4,9	WWN.911.402.0300
63	63	14	400	6,5	WWN.911.402.0400
63	63	14	500	8,1	WWN.911.402.0500
63	63	14	600	9,7	WWN.911.402.0600
63	63	14	800	13	WWN.911.402.0800
63	63	14	1000	16	WWN.911.402.1000
80	80	16	100	2,4	WWN.911.403.0100
80	80	16	200	4,8	WWN.911.403.0200
80	80	16	300	7,2	WWN.911.403.0300
80	80	16	400	9,6	WWN.911.403.0400
80	80	16	500	11,5	WWN.911.403.0500
80	80	16	600	13,8	WWN.911.403.0600
100	100	20	100	3,7	WWN.911.404.0100
100	100	20	200	7,5	WWN.911.404.0200
100	100	20	300	11,1	WWN.911.404.0300
100	100	20	400	14,8	WWN.911.404.0400
100	100	20	500	18,5	WWN.911.404.0500
100	100	20	600	22	WWN.911.404.0600
100	100	20	700	26	WWN.911.404.0700
100	100	20	800	29,6	WWN.911.404.0800
125	125	22	100	5,2	WWN.911.405.0100
125	125	22	200	10	WWN.911.405.0200
125	125	22	300	15,7	WWN.911.405.0300
125	125	22	400	21	WWN.911.405.0400
125	125	22	500	26,2	WWN.911.405.0500

PROFIL EN "U" EN FONTE

WWW.911

MATIERE : fonte EN 1561

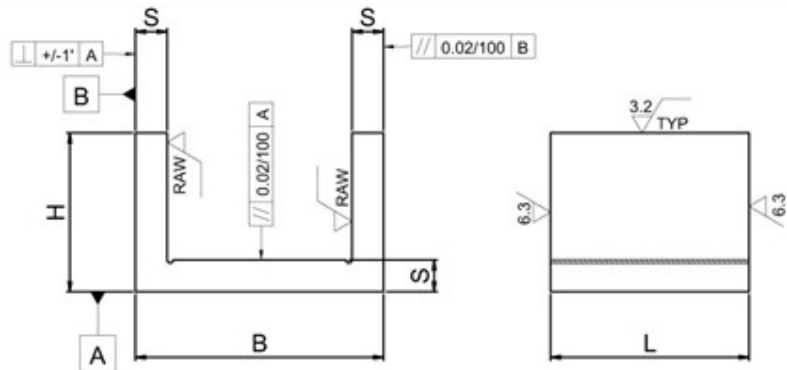
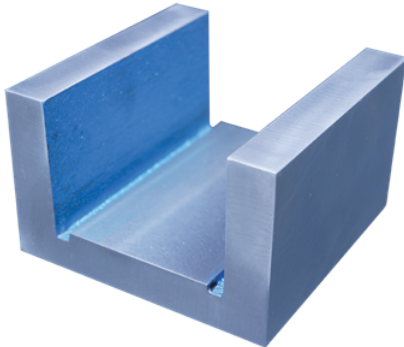


B	H	S	L	poids (kg)	Ref.
125	125	22	600	31,4	WWN.911.405.0600
125	125	22	700	36,7	WWN.911.405.0700
125	125	22	800	42	WWN.911.405.0800
150	150	25	100	7,2	WWN.911.4055.0100
150	150	25	200	14	WWN.911.4055.0200
150	150	25	300	22	WWN.911.4055.0300
150	150	25	400	29	WWN.911.4055.0400
150	150	25	500	36	WWN.911.4055.0500
150	150	25	600	43	WWN.911.4055.0600
150	150	25	700	50	WWN.911.4055.0700
150	150	25	800	58	WWN.911.4055.0800
160	160	25	100	7,7	WWN.911.406.0100
160	160	25	200	15,5	WWN.911.406.0200
160	160	25	300	23,2	WWN.911.406.0300
160	160	25	400	31	WWN.911.406.0400
160	160	25	500	38,7	WWN.911.406.0500
160	160	25	600	46,4	WWN.911.406.0600
160	160	25	700	54,2	WWN.911.406.0700
160	160	25	800	62	WWN.911.406.0800
200	200	32	100	12,3	WWN.911.407.0100
200	200	32	200	24,7	WWN.911.407.0200
200	200	32	300	37	WWN.911.407.0300
200	200	32	400	49	WWN.911.407.0400
200	200	32	500	61,7	WWN.911.407.0500
200	200	32	600	74	WWN.911.407.0600
200	200	32	700	86,4	WWN.911.407.0700
200	200	32	800	98,8	WWN.911.407.0800
250	250	36	200	35,1	WWN.911.408.0200
250	250	36	400	70,3	WWN.911.408.0400
250	250	36	600	105	WWN.911.408.0600
250	250	36	800	140	WWN.911.408.0800
315	250	36	200	38	WWN.911.4085.0200
315	250	36	400	76	WWN.911.4085.0400
315	250	36	600	114	WWN.911.4085.0600
315	250	36	800	152	WWN.911.4085.0800

PROFILE EN "U" EN FONTE

WWW.910

MATIERE : fonte EN 1561

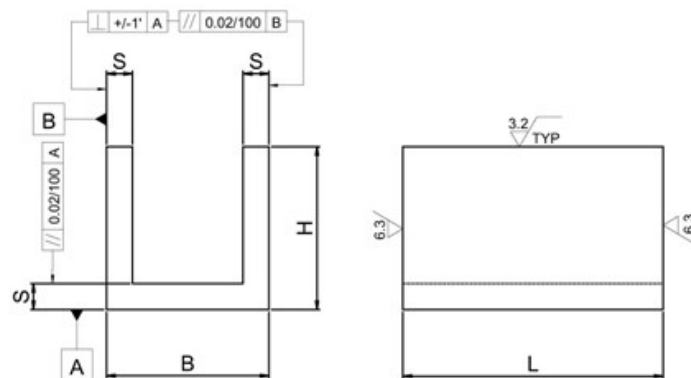
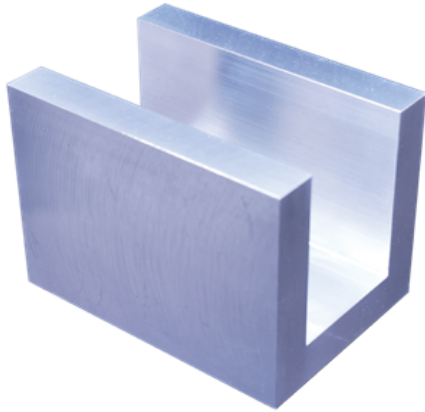


B	H	S	L	poids (kg)	Ref.
80	45	12	100	1,3	WWN.910.401.0100
80	45	12	200	2,5	WWN.910.401.0200
80	45	12	300	3,8	WWN.910.401.0300
80	45	12	400	5	WWN.910.401.0400
80	45	12	500	6,3	WWN.910.401.0500
100	63	16	100	2,2	WWN.910.402.0100
100	63	16	200	4,5	WWN.910.402.0200
100	63	16	300	6,8	WWN.910.402.0300
100	63	16	400	8,8	WWN.910.402.0400
100	63	16	500	11	WWN.910.402.0500
125	80	16	100	2,9	WWN.910.403.0100
125	80	16	200	5,8	WWN.910.403.0200
125	80	16	300	8,7	WWN.910.403.0300
125	80	16	400	12	WWN.910.403.0400
125	80	16	500	15	WWN.910.403.0500
160	90	20	100	4,3	WWN.910.404.0100
160	90	20	200	8,6	WWN.910.404.0200
160	90	20	300	13	WWN.910.404.0300
160	90	20	400	17,2	WWN.910.404.0400
160	90	20	500	21,5	WWN.910.404.0500
200	90	22	100	5,3	WWN.910.405.0100
200	90	22	200	10,6	WWN.910.405.0200
200	90	22	300	16	WWN.910.405.0300
200	90	22	400	21,2	WWN.910.405.0400
200	90	22	500	26,6	WWN.910.405.0500
250	100	25	100	7,2	WWN.910.406.0100
250	100	25	200	14,4	WWN.910.406.0200
250	100	25	300	21,6	WWN.910.406.0300
250	100	25	400	28,8	WWN.910.406.0400
250	100	25	500	30	WWN.910.406.0500

PROFILER EN "U" EN ALUMINIUM

WWN.943

MATIERE : Aluminium A-A 70-75

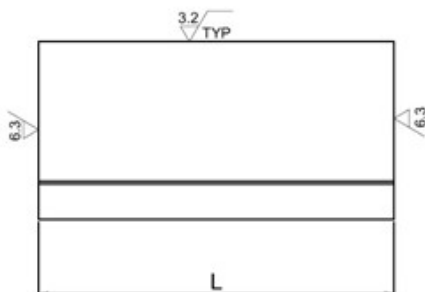
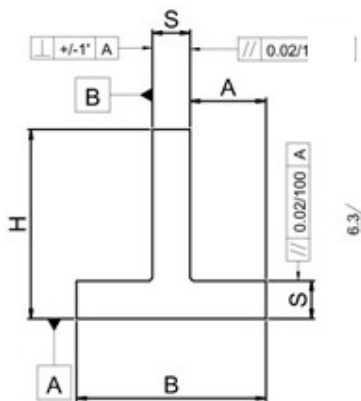
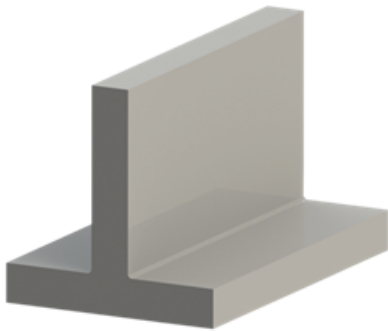


B	H	S	L	poids (kg)	Ref.
63	63	12	100	0,5	WWN.943.400.0100
63	63	12	200	1	WWN.943.400.0200
63	63	12	300	1,5	WWN.943.400.0300
63	63	12	400	2	WWN.943.400.0400
63	63	12	500	2,5	WWN.943.400.0500
63	63	12	600	3	WWN.943.400.0600
80	80	16	100	0,9	WWN.943.401.0100
80	80	16	200	1,7	WWN.943.401.0200
80	80	16	300	2,6	WWN.943.401.0300
80	80	16	400	3,6	WWN.943.401.0400
80	80	16	500	4,5	WWN.943.401.0500
80	80	16	600	5,4	WWN.943.401.0600
100	100	20	100	1,1	WWN.943.402.0100
100	100	20	200	2,8	WWN.943.402.0200
100	100	20	300	4,2	WWN.943.402.0300
100	100	20	400	5,6	WWN.943.402.0400
100	100	20	500	7	WWN.943.402.0500
100	100	20	600	8,4	WWN.943.402.0600
125	125	20	100	1,7	WWN.943.403.0100
125	125	20	200	3,6	WWN.943.403.0200
125	125	20	300	5,4	WWN.943.403.0300
125	125	20	400	7,2	WWN.943.403.0400
125	125	20	500	9	WWN.943.403.0500
125	125	20	600	11	WWN.943.403.0600
160	160	25	100	2,7	WWN.943.4035.0100
160	160	25	200	5,4	WWN.943.4035.0200
160	160	25	300	8,1	WWN.943.4035.0300
160	160	25	400	11	WWN.943.4035.0400
160	160	25	500	13,5	WWN.943.4035.0500
160	160	25	600	16	WWN.943.4035.0600
200	200	32	100	4,6	WWN.943.404.0100
200	200	32	200	9,3	WWN.943.404.0200
200	200	32	300	14	WWN.943.404.0300
200	200	32	400	19	WWN.943.404.0400
200	200	32	500	23	WWN.943.404.0500
200	200	32	600	28	WWN.943.404.0600

BLOC EN "T" EN FONTE

WWW.917

MATIERE : fonte EN 1561

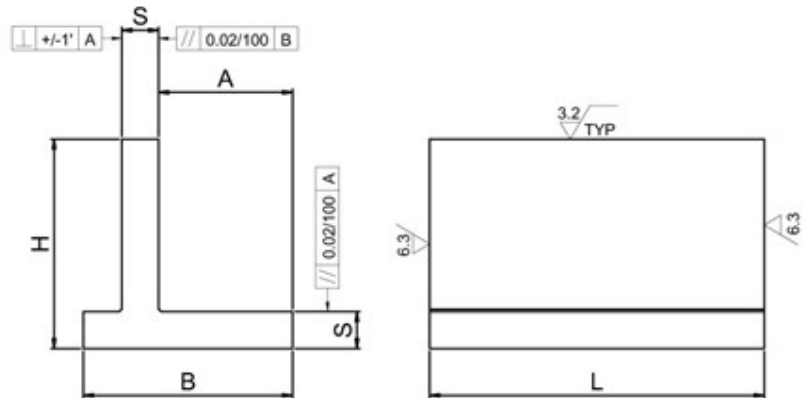
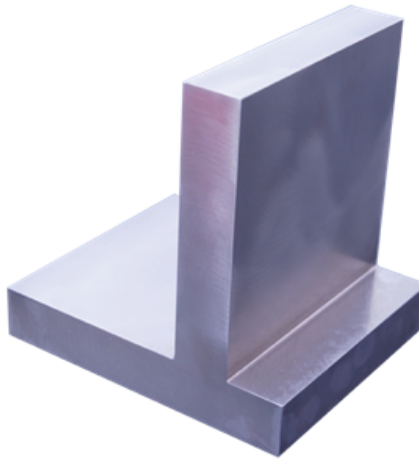


B	H	S	A	L	poids (kg)	Ref.
50	50	12	19	300	2,3	WWN.917.401.0300
50	50	12	19	600	4,6	WWN.917.401.0600
50	50	12	19	900	6,9	WWN.917.401.0900
63	63	14	24.5	200	2,3	WWN.917.402.0200
63	63	14	24.5	400	4,5	WWN.917.402.0400
63	63	14	24.5	600	6,8	WWN.917.402.0600
63	63	14	24.5	800	9	WWN.917.402.0800
63	63	14	24.5	1000	11,3	WWN.917.402.1000
80	80	16	32	100	1,7	WWN.917.403.0100
80	80	16	32	200	3,3	WWN.917.403.0200
80	80	16	32	300	5	WWN.917.403.0300
80	80	16	32	400	6,6	WWN.917.403.0400
80	80	16	32	500	8,3	WWN.917.403.0500
80	80	16	32	600	9,9	WWN.917.403.0600
80	80	16	32	700	12	WWN.917.403.0700
80	80	16	32	800	13,6	WWN.917.403.0800
100	100	20	40	200	5,2	WWN.917.404.0200
100	100	20	40	400	10,5	WWN.917.404.0400
100	100	20	40	600	16	WWN.917.404.0600
100	100	20	40	800	20,7	WWN.917.404.0800
125	125	22	51.5	200	7,2	WWN.917.405.0200
125	125	22	51.5	400	14,4	WWN.917.405.0400
125	125	22	51.5	600	21,7	WWN.917.405.0600
125	125	22	51.5	800	28,8	WWN.917.405.0800
160	160	25	67.5	100	5,3	WWN.917.406.0100
160	160	25	67.5	200	10,6	WWN.917.406.0200
160	160	25	67.5	300	15,9	WWN.917.406.0300
160	160	25	67.5	400	21,2	WWN.917.406.0400
160	160	25	67.5	500	26,5	WWN.917.406.0500
160	160	25	67.5	600	31,8	WWN.917.406.0600
160	160	25	67.5	700	37,1	WWN.917.406.0700
160	160	25	67.5	800	42,4	WWN.917.406.0800
200	200	32	84	100	8,5	WWN.917.407.0100
200	200	32	84	200	17	WWN.917.407.0200
200	200	32	84	300	25,4	WWN.917.407.0300
200	200	32	84	400	33,9	WWN.917.407.0400
200	200	32	84	500	42,4	WWN.917.407.0500
200	200	32	84	600	50,9	WWN.917.407.0600
200	200	32	84	700	59,3	WWN.917.407.0700
200	200	32	84	800	67,8	WWN.917.407.0800

BLOC EN "T" EN FONTE

WWN.919

MATIERE : fonte EN 1561

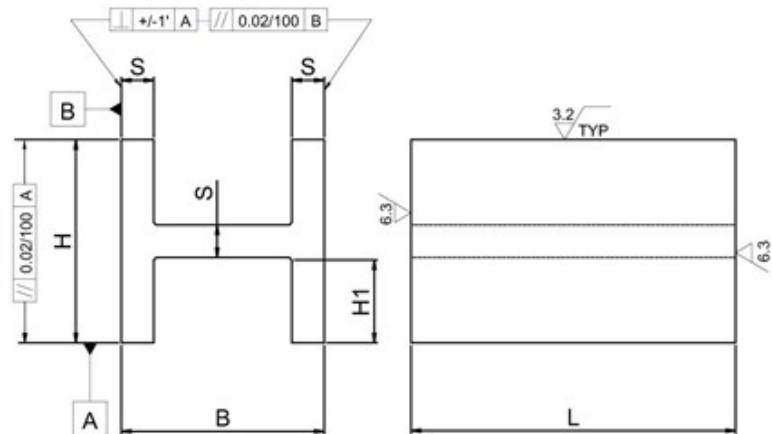
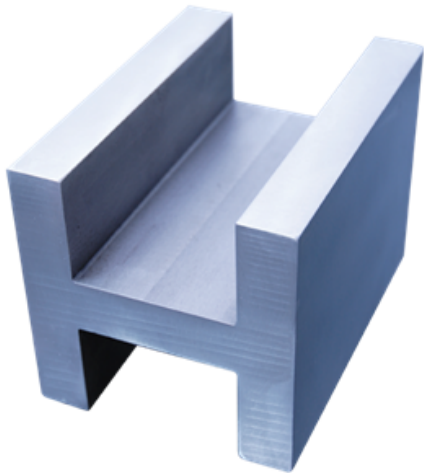


B	H	S	A	L	poids (kg)	Ref.
100	100	20	63	100	2,6	WWN.919.401.0100
100	100	20	63	200	5,2	WWN.919.401.0200
100	100	20	63	300	7,8	WWN.919.401.0300
100	100	20	63	400	10,4	WWN.919.401.0400
100	100	20	63	500	13	WWN.919.401.0500
100	100	20	63	600	15,5	WWN.919.401.0600
125	125	22	80	100	3,6	WWN.919.402.0100
125	125	22	80	200	7,2	WWN.919.402.0200
125	125	22	80	300	10,8	WWN.919.402.0300
125	125	22	80	400	14,4	WWN.919.402.0400
125	125	22	80	500	18	WWN.919.402.0500
125	125	22	80	600	21,6	WWN.919.402.0600
160	160	25	100	100	5,3	WWN.919.403.0100
160	160	25	100	200	10,6	WWN.919.403.0200
160	160	25	100	300	15,9	WWN.919.403.0300
160	160	25	100	400	21,2	WWN.919.403.0400
160	160	25	100	500	26,5	WWN.919.403.0500
160	160	25	100	600	31,8	WWN.919.403.0600
200	200	32	125	100	8,5	WWN.919.404.0100
200	200	32	125	200	17	WWN.919.404.0200
200	200	32	125	300	25,4	WWN.919.404.0300
200	200	32	125	400	33,9	WWN.919.404.0400
200	200	32	125	500	42,4	WWN.919.404.0500
200	200	32	125	600	50,9	WWN.919.404.0600

PROFIL EN "H" EN FONTE

WWW.907

MATIERE : fonte EN 1561



B	H	H1	S	L	kg	Ref
80	80	32	16	200	4,8	WWN.907.401.0200
80	80	32	16	400	9,6	WWN.907.401.0400
80	80	32	16	600	13,8	WWN.907.401.0600
100	100	40	20	200	7,4	WWN.907.402.0200
100	100	40	20	400	14,8	WWN.907.402.0400
100	100	40	20	600	22	WWN.907.402.0600
125	125	52.5	20	200	9,6	WWN.907.403.0200
125	125	52.5	20	400	19,3	WWN.907.403.0400
125	125	52.5	20	600	29	WWN.907.403.0600
160	160	67.5	25	200	15,5	WWN.907.404.0200
160	160	67.5	25	400	31	WWN.907.404.0400
160	160	67.5	25	600	46,4	WWN.907.404.0600
200	200	84	32	200	24,7	WWN.907.405.0200
200	200	84	32	400	49	WWN.907.405.0400
200	200	84	32	600	74	WWN.907.405.0600