

**BOLKNOP UIT METAAL
DIN 319**

D319.ST. / LE.



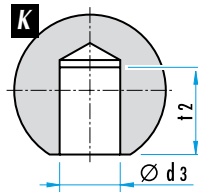
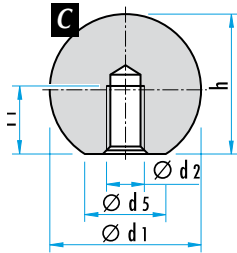
MATERIAAL EN UITVOERING :

Ref. D319.ST : gepolijst staal,

Ref. D319.LE : gepolijst lichtmetaal,

• vorm C : getapte boring $\varnothing d2$: Ref. D319.xx.C...,

• vorm K : met gladde boring $\varnothing d3$: Ref. D319.xx.K...



Ø d1	d2	Ø d3	Ø d5	h	t1	t2
16	M4	6	8	15	7,2	9
20	M5	8	12	18	9,1	11
25	M6	10	15	22,5	11	14
32	M8	12	18	29	14,5	17
40	M10	16	22	37	18	22
50	M12	20	27	46	21	28



BESTELVOORBEELD :

Ref. D319, staal, vorm C, d1 = 16 = Ref. D319.ST.C.16

Ref. D319, aluminium, vorm K, d1 = 40 = Ref. D319.LE.K.40

BOLKNOP UIT RVS - DIN 319

D319.RF...



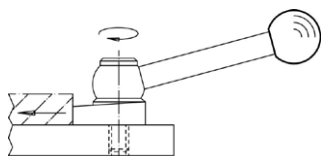
MATERIAAL EN UITVOERING :

Gepolijst RVS 1.4301 (AISI 304).

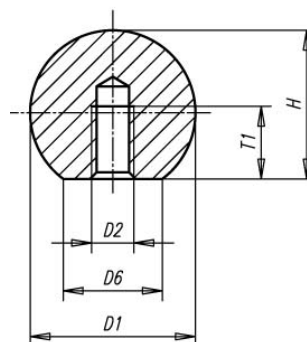
vorm C : met getapte boring = D319.RF.C...

vorm K : met gladde boring = D319.RF.K...

D1	D2	D4	≈ D6	≈ H	T1 min.	T2 min.	Ref.	
							Vorm C	Vorm K
16	M4	6	8	15	7.2	10	D319.RF.C.16	D319.RF.K.16
20	M5	8	12	18	9.1	12	D319.RF.C.20	D319.RF.K.20
25	M6	10	15	22.5	11	16	D319.RF.C.25	D319.RF.K.25
32	M8	12	18	29	14.5	20	D319.RF.C.32	D319.RF.K.32
40	M10	16	22	37	18	25	D319.RF.C.40	D319.RF.K.40
50	M12	20	28	46	21	32	D319.RF.C.50	D319.RF.K.50



Vorm C



Vorm K

