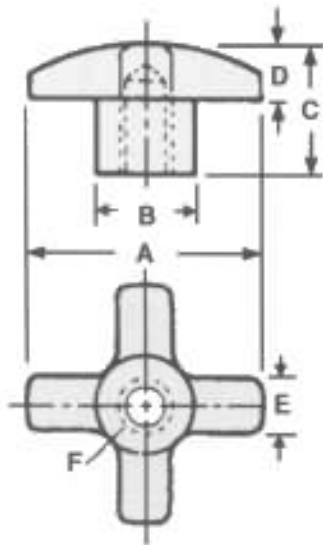


4-ARMIGE KNOP UIT GIETIJZER

JIC.163



MATERIAAL :

Grijs gietijzer, vol

UITVOERING :

- vol of vol
- met gladde boringtolerantie + 0,5 / - 0,00 mm
- met getapte boring

| A | B | C | D | E | F | Uitvoering | Ref. |
|----|----|----|----|----|----|------------|---------------|
| 28 | 16 | 19 | 8 | 8 | - | Vol | JIC.16305 (*) |
| 28 | 16 | 17 | 8 | 8 | 12 | diam 6 | JIC.16354 |
| 28 | 16 | 17 | 8 | 8 | 12 | M6 | JIC.16355 |
| 38 | 17 | 23 | 11 | 9 | - | Vol | JIC.16308 (*) |
| 38 | 17 | 22 | 11 | 9 | 14 | diam 8 | JIC.16359 |
| 38 | 17 | 22 | 11 | 9 | 14 | M8 | JIC.16361 |
| 50 | 19 | 30 | 13 | 13 | - | Vol | JIC.16313 (*) |
| 50 | 19 | 28 | 13 | 13 | 17 | diam 10 | JIC.16364 |
| 50 | 19 | 28 | 13 | 13 | 17 | M10 | JIC.16366 |
| 63 | 29 | 39 | 16 | 16 | - | Vol | JIC.16318 (*) |
| 63 | 29 | 38 | 16 | 16 | 25 | diam 12 | JIC.16369 |
| 63 | 29 | 38 | 16 | 16 | 25 | diam 16 | JIC.16370 |
| 63 | 29 | 38 | 16 | 16 | 25 | M12 | JIC.16371 |
| 63 | 29 | 38 | 16 | 16 | 25 | M16 | JIC.16372 |
| 75 | 32 | 45 | 14 | 16 | - | Vol | JIC.16323 (*) |
| 75 | 32 | 44 | 14 | 16 | 28 | diam 16 | JIC.16374 |
| 75 | 32 | 44 | 14 | 16 | 28 | diam 20 | JIC.16375 |
| 75 | 32 | 44 | 14 | 16 | 28 | M16 | JIC.16377 |
| 75 | 32 | 44 | 14 | 16 | 28 | M20 | JIC.16378 |

(*) = zonder boring