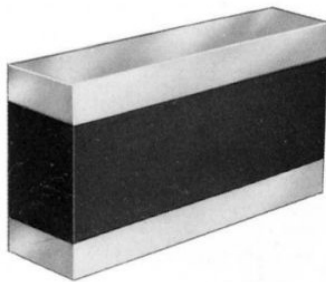


**TRILLINGDEMPENDE RAIL**

**SLB.R.A / F**



**MATERIAAL EN UITVOERING :**

Natuurrubber 55 +/- 5 Sh A (op aanvraag : andere hardheden).

Platen uit verzinkt staal.

Standaard lengte : 2.000 mm – te snijden door de gebruiker.

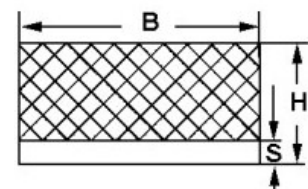
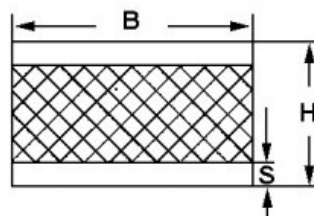
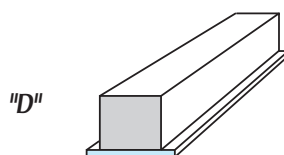
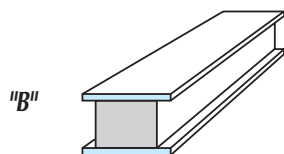
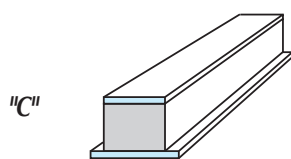
**Vorm A** = met 2 stalen platen

**Vorm F** = met één enkele stalen plaat.

Op aanvraag : vormen C, B en D.

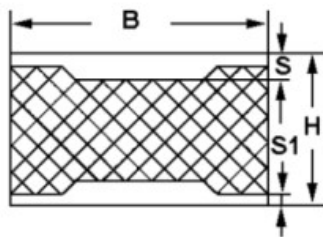
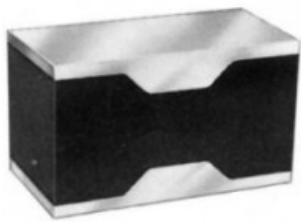
B	H	S
25	30	5
30	30	5
40	20 / 35 / 40 / 45	5 / 8 / 10
50	20 / 35 / 40 / 45 / 50 / 55 / 70	5 / 10
60	40 / 50 / 60 / 70 / 80	10
70	30 / 40 / 45 / 50 / 60 / 65 / 70 / 80	10
80	45 / 80	10
100	40 / 45 / 50 / 55 / 60 / 70 / 80 / 100	10/15
120	40 / 45 / 50 / 60 / 70 / 80 / 100	10/15
150	45 / 50 / 60 / 70 / 80 / 100	10/15
200	60 / 80 / 100	15
300	100	15

*Andere types*



**TRILLINGDEMPENDE RAIL**

**SLB.R**



**MATERIAAL EN UITVOERING :**

Natuurrubber 55 +/- 5 Sh A (op aanvraag : andere hardheden).

Platen uit verzinkt staal.

Ref. SLB.R.AR = met versterkte stalen plaat

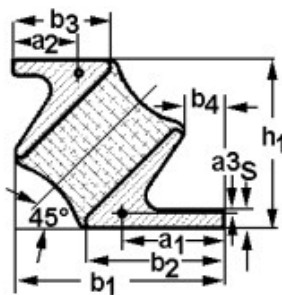
Ref. SLB.R.AM = 45°.

Ref. SLB.R.UC = «U»-vormig

Ref. SLB.R.IB = blok met basisplaat.

**SLB.R.AR :**

B	H	S	S1
50	35 / 40 / 45 / 50 / 55 / 60 / 70	10	5
60	35 / 60	11	5
70	30 / 45 / 50 / 60 / 80	12	5
100	40 / 45 / 50 / 55 / 60 / 70 / 80	15	5

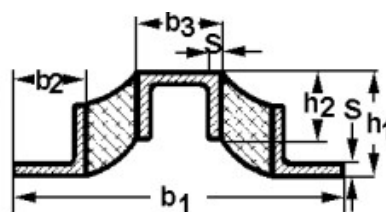
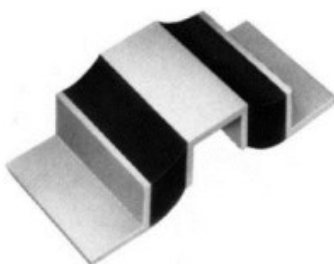


**SLB.R.AM :**

b1 : 108 / 144

h1 : 80 / 106

Lengte : 75 / 200

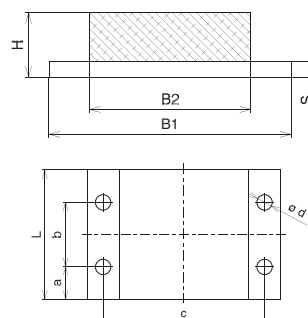
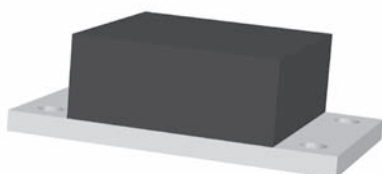


**SLB.R.UC :**

b1 = 110

h1 = 34

Lengte : 25 / 50 / 75 / 2.000 mm

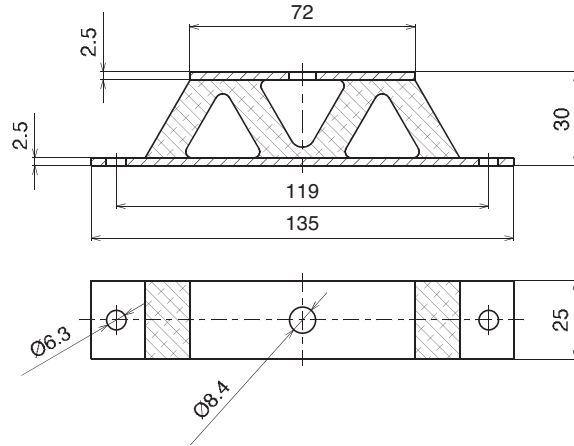
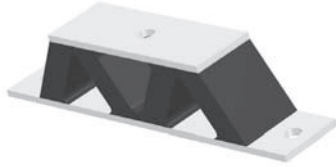


**SLB.R.IB :**

L	H	B2	B1
50	35 / 70	70	130
100	45 / 80	120	200
120	45 / 70	150	250
150	50 / 80	200	300

# TRILLINGDEMPENDE RAIL

SLB.R.W :



SLB.R.V :

