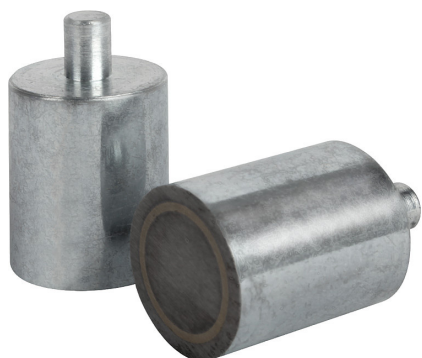
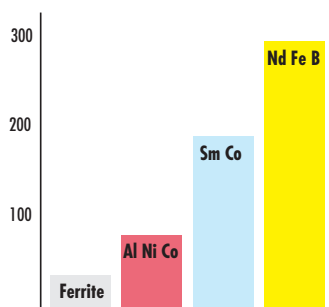
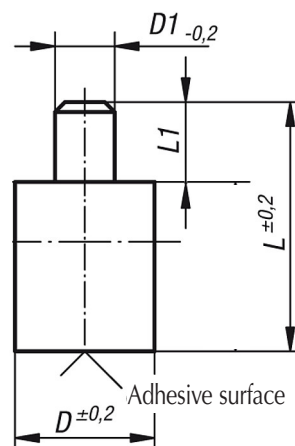


**POTMAGNEET UIT AL NI CO  
MET GLADDE PEN "AN"**

**MAG.DPT.AN**



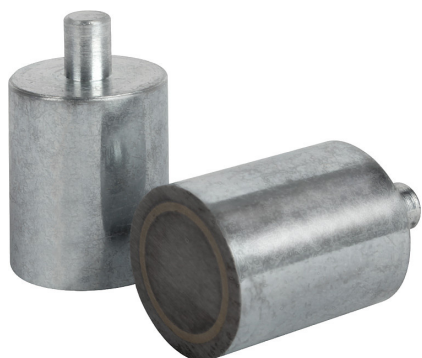
Klok uit verzinkt staal.  
Voor temperaturen tot 450°C.



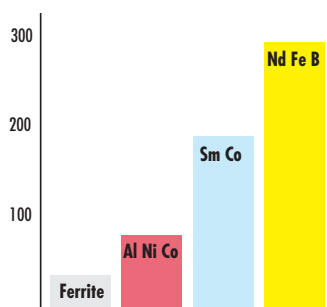
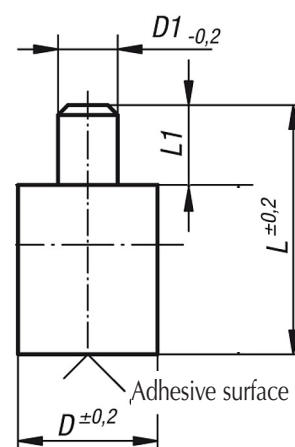
Ø D	L	D1 x L1	Kracht (daN)	Ref
6	20	Ø 3 x 8	0,2	MAG.DPT.AN.006.20
8	20	Ø 3 x 8	0,4	MAG.DPT.AN.008.20
10	20	Ø 4 x 8	0,9	MAG.DPT.AN.010.20
13	20	Ø 4 x 8	1,2	MAG.DPT.AN.013.20
16	20	Ø 5 x 8	2	MAG.DPT.AN.016.20
20	25	Ø 6 x 8	4,5	MAG.DPT.AN.020.25
25	35	Ø 8 x 10	10	MAG.DPT.AN.025.35
32	40	Ø 10 x 10	19	MAG.DPT.AN.032.40
40	50	Ø 15 x 20	24	MAG.DPT.AN.040.50
50	60	Ø 18 x 25	42	MAG.DPT.AN.050.60
63	65	Ø 20 x 30	66	MAG.DPT.AN.063.65

**POTMAGNEET UIT NEODYMIUM  
MET GLADDE PEN "ND"**

**MAG.DPT.ND**



Klok uit verzinkt staal.  
Voor temperaturen tot 80°C.



Ø D	L	D1 x L1	Kracht (daN)	Ref
6	20	Ø 3 x 8	0,6	<b>MAG.DPT.ND.006.20</b>
8	20	Ø 3 x 8	1,2	<b>MAG.DPT.ND.008.20</b>
10	20	Ø 4 x 8	2,4	<b>MAG.DPT.ND.010.20</b>
13	20	Ø 4 x 8	6	<b>MAG.DPT.ND.013.20</b>
16	20	Ø 5 x 8	9	<b>MAG.DPT.ND.016.20</b>
20	25	Ø 6 x 8	13,5	<b>MAG.DPT.ND.020.25</b>
25	35	Ø 8 x 10	19	<b>MAG.DPT.ND.025.35</b>
32	40	Ø 10 x 10	34	<b>MAG.DPT.ND.032.40</b>