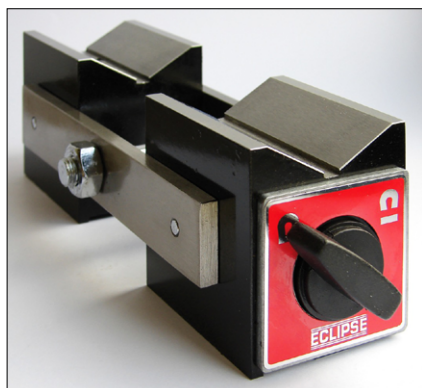
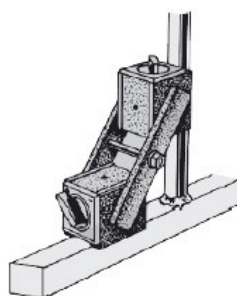


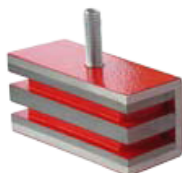
## ORIËNTEERBARE POSITIEHOUDER VOOR LASWERK

**EMS.922**


afmetingen L x H x B	kracht (daN)	Ref
206 x 63,5 x 76	8	<i>EMS.922.P = 2 blokken + 2 tussenstukken</i>
63,5 x 63,5 x 51	8	<i>EMS.922.U = 1 enkel blok</i>



EMS.920.HFU



EMS.920.HFP



EMS.920.ANU



EMS.920.ANP



afmetingen L x H x B	kracht (daN)	Ref
127 x 25 x 51	12	<i>EMS.920.HFP = 2 ferriet magneten + 1 tussenstuk</i>
60 x 25 x 29	12	<i>EMS.920.HFU = 1 enkele ferriet magneet</i>
127 x 25 x 29	12	<i>EMS.920.ANP = 2 Al Ni Co magneten + 1 tussenstuk</i>
60 x 25 x 25	12	<i>EMS.920.ANU = 1 enkele Al Ni Co magneet</i>

