

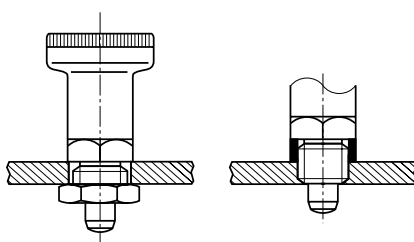
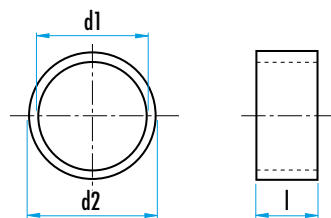
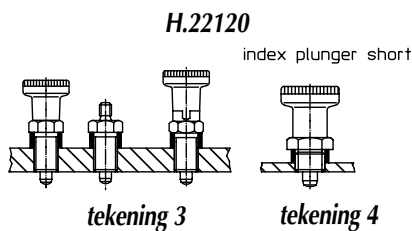
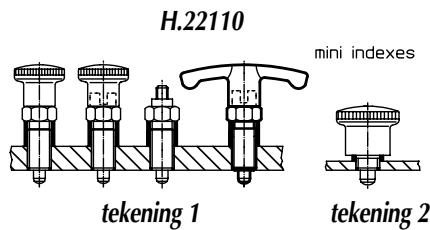
## TUSSENRING VOOR KORTE BLOKKEERSTIFT



MATERIAAL : RVS 1.4305

**OPMERKING :**  
deze tussenring laat toe de lengte van de schroefdraad van de blokkeerstift aan te passen aan de lengte van de bevestiging volgens de toepassing.

d1 H12	l +/- 0,1	d2 - 0,1	voor tekening	Ref.
8	2	10	1/2	H.22120.0632
8	3	10	1	H.22120.0633
8	4	10	1	H.22120.0634
8	6	10	1	H.22120.0636
8	8	10	1	H.22120.0638
8	10	10	1	H.22120.0640
10	2	12	1/2/3	H.22120.0642
10	4	12	1/2/3	H.22120.0644
10	6	12	1/3	H.22120.0646
10	8	12	1/3	H.22120.0648
10	10	12	1/3	H.22120.0650
10	12	12	1/3	H.22120.0652
12	2	14	1	H.22120.0662
12	4	14	1	H.22120.0664
12	6	14	1	H.22120.0666
12	8	14	1	H.22120.0668
12	2	17 (*)	3/4	H.22120.0672
12	4	17 (*)	3/4	H.22120.0674
12	5	17 (*)	3/4	H.22120.0675
16	4	17	1	H.22120.0676
16	6	17	1	H.22120.0677
16	8	17	1	H.22120.0678
16	10	17	1	H.22120.0679
16	12	17	1	H.22120.0680
16	2	19	3/4	H.22120.0682
16	4	19	3/4	H.22120.0684
16	6	19	3/4	H.22120.0686
16	8	19	3/4	H.22120.0688
16	10	19	3	H.22120.0690
16	12	19	3	H.22120.0692
20	6	22	1/3	H.22120.0693
20	8	22	1/3	H.22120.0694
20	10	22	1/3	H.22120.0695
20	12	22	1/3	H.22120.0696
20	14	22	1/3	H.22120.0697
20	16	22	1/3	H.22120.0698
20	18	22	1/3	H.22120.0699



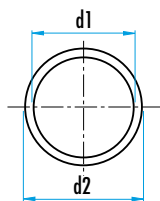
(\*) : alleen voor bovenvermelde korte blokkeerstift met schroefdraad.

## TUSSENRING VOOR KORTE BLOKKEERSTIFT

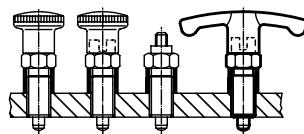
H.22120.08



d1 H 12	l +/- 0,1	d2 - 0,1	voor stift Ø	voor schets	Ref.	
					Staal	RVS
8	2	10	4 / 5	1/2	H.22120.0832	H.22120.0632
8	3	10	4 / 5	1	H.22120.0833	H.22120.0633
8	4	10	4 / 5	1	H.22120.0834	H.22120.0634
8	6	10	4 / 5	1	H.22120.0836	H.22120.0636
8	8	10	4 / 5	1	H.22120.0838	H.22120.0638
8	10	10	4 / 5	1	H.22120.0840	H.22120.0640
10	2	12	5 / 6 / 7	1/2/3	H.22120.0842	H.22120.0642
10	4	12	5 / 6 / 7	1/2/3	H.22120.0844	H.22120.0644
10	6	12	5 / 6 / 7	1/3	H.22120.0846	H.22120.0646
10	8	12	5 / 6 / 7	1/3	H.22120.0848	H.22120.0648
10	10	12	5 / 6 / 7	1/3	H.22120.0850	H.22120.0650
10	12	12	5 / 6 / 7	1/3	H.22120.0852	H.22120.0652
12	2	14	6 / 8	1	H.22120.0862	H.22120.0662
12	4	14	6 / 8	1	H.22120.0864	H.22120.0664
12	6	14	6 / 8	1	H.22120.0866	H.22120.0666
12	8	14	6 / 8	1	H.22120.0868	H.22120.0668
12	2	17 (*)	6 / 8	3/4	H.22120.0872	H.22120.0672
12	4	17 (*)	6 / 8	3/4	H.22120.0874	H.22120.0674
12	5	17 (*)	6 / 8	3/4	H.22120.0875	H.22120.0675
16	4	17	8 / 10	1	H.22120.0876	H.22120.0676
16	6	17	8 / 10	1	H.22120.0877	H.22120.0677
16	8	17	8 / 10	1	H.22120.0878	H.22120.0678
16	10	17	8 / 10	1	H.22120.0879	H.22120.0679
16	12	17	8 / 10	1	H.22120.0880	H.22120.0680
16	2	19	8 / 10	3/4	H.22120.0882	H.22120.0682
16	4	19	8 / 10	3/4	H.22120.0884	H.22120.0684
16	6	19	8 / 10	3/4	H.22120.0886	H.22120.0686
16	8	19	8 / 10	3/4	H.22120.0888	H.22120.0688
16	10	19	8 / 10	3	H.22120.0890	H.22120.0690
16	12	19	8 / 10	3	H.22120.0892	H.22120.0692

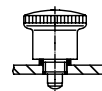


H.22110



Schets 1

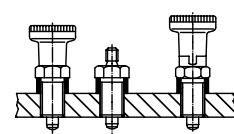
Mini



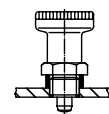
Schets 2

H.22120

Korte uitvoering



Schets 3



Schets 4

