

GESPLETE STELRING MET VERSTELBAAR HANDVAT

GWN.7064

MATERIAAL EN UITVOERING :

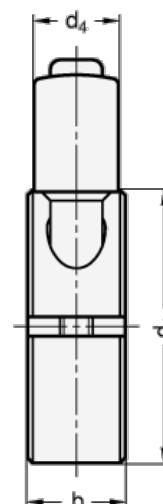
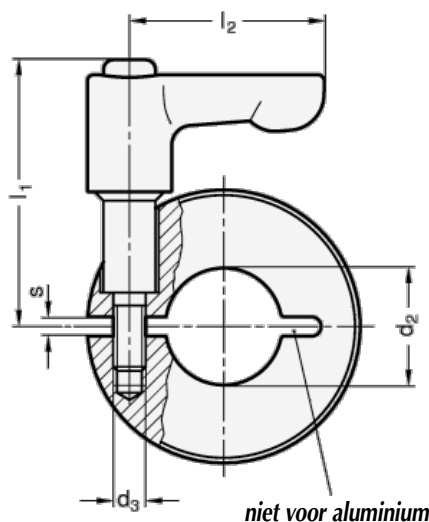
Ref. GWN.7064...S = stelling uit staal, zwart.


Ref. GWN.7064...L = stelling uit aluminium.

Ref. GWN.7064...R = stelling uit RVS 1.4404 – AISI 316 L

Handvat uit zamak van zwarte kleur (RAL 9005)

met binnendelen uit RVS.1.4305 – AIAIS 303.



Ø d2	Ø d1	b±0,2	d3	Ø d4	l1	l2	s			
								staal	Ref. alu	INOX
14	32	11	M 4	13	37	30	2,1	GWN.7064.14.32.S	GWN.7064.14.32.L	GWN.7064.14.32.R
15	36	13	M 5	13	38,5	30	2,1	GWN.7064.15.36.S	GWN.7064.15.36.L	GWN.7064.15.36.R
16	36	15	M 5	13	38,5	30	3	GWN.7064.16.36.S	GWN.7064.16.36.L	GWN.7064.16.36.R
18	42	15	M 5	13	41	30	3	GWN.7064.18.36.S	GWN.7064.18.36.L	GWN.7064.18.36.R
20	42	15	M 5	13	41	45	3	GWN.7064.20.42.S	GWN.7064.20.42.L	GWN.7064.20.42.R
22	48	15	M 5	13	43	45	3	GWN.7064.22.48.S	GWN.7064.22.48.L	GWN.7064.22.48.R
25	48	15	M 5	13	43	45	3	GWN.7064.25.48.S	GWN.7064.25.48.L	GWN.7064.25.48.R
28	55	15	M 6	13	45	45	3	GWN.7064.28.55.S	GWN.7064.28.55.L	GWN.7064.28.55.R
30	55	15	M 6	13	45	45	4	GWN.7064.30.55.S	GWN.7064.30.55.L	GWN.7064.30.55.R
32	60	15	M 6	13	46,5	45	4	GWN.7064.32.60.S	GWN.7064.32.60.L	GWN.7064.32.60.R
35	60	15	M 6	13	46,5	45	4	GWN.7064.35.60.S	GWN.7064.35.60.L	GWN.7064.35.60.R
40	65	15	M 6	13	47,5	45	4	GWN.7064.40.65.S	GWN.7064.40.65.L	GWN.7064.40.65.R