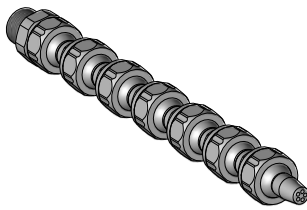


MODULAIRE SEGMENTSLANG HOGE DRUK UIT ALUMINIUM 1/8 "

CLS.18



Lichte koelingflexibel uit geëloxeerde aluminium voor koelvloeistoffen of lucht.
Voor werkdruk **tot 80 bar** .

Doorlaat : Ø 3,4 mm.

Spankoppel : 2 - 3 Nm.

Sterke onbuigzaamheid, door alle componenten op te spannen voor een precieze straal.
Interessant voor warme spanen of lange lusspanen.

KOPPELING 1/8" :

- Koppeling G 1/8"
- Koppeling R 1/8"
- Koppeling 1/8" NPT
- Koppeling R 1/4"
- Koppeling M8 x 1,25
- Koppeling M8 x 1
- Koppeling M10 x 1

Ref. CLS.18.GA.G.18

Ref. CLS.14.GA.R.18

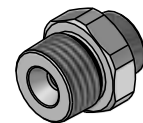
Ref. CLS.18.GA.N.18.

Ref. CLS.18.GA.R.14

Ref. CLS.18.GA.M.08

Ref. CLS.18.GA.M.08.F

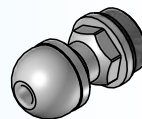
Ref. CLS.18.GA.M.10.F



SUR DEMANDE :

Raccord M6 / NPT 1/16" / M10 x 0,5.

Adaptateur à boule (Ø 10 / 12 / 14 mm) pour montage direct sur machines-outils



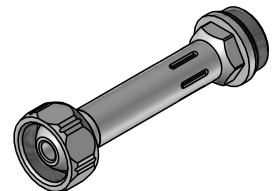
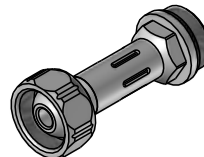
TUSSENSTUK 1/8" :

- Segment L = 20 mm
- Segment L = 32 mm
- Segment L = 45 mm

Ref. CLS.18.D.20

Ref. CLS.18.D.32

Ref. CLS.18.D.45



RONDE RECHTE SPROEIKOP – bevestiging met moer Ref. CLS.18.MT :

- Buse ronde Ø 1 mm
- Buse ronde Ø 2 mm
- Buse ronde Ø 3,4 mm
- Buse ronde multiple – 5 x Ø 1

Ref. CLS.18.RD.01

Ref. CLS.18.RD.02

Ref. CLS.18.RD.03

Ref. CLS.18.RDM.05



RONDE MULTI SPROEIKOP – bevestiging met moer Ref. CLS.18.MT :

- Ronde sproeikop 60° kort
- Ronde sproeikop 60° lang
- Ronde sproeikop 90° kort
- Ronde sproeikop 90° lang

Ref. CLS.18.SDK.60

Ref. CLS.1SDL.60

Ref. CLS.18.SDK.90

Ref. CLS.18.SDL.90



VERBINDINGSTUK 1/8" :

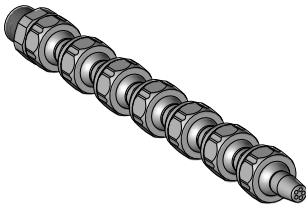
- Elleboog – één uitgang 90°

Ref. CLS.18.VS.L



MODULAIRE SEGMENTSLANG HOGE DRUK UIT ALUMINIUM 1/8 ''

CLS.18



TOEBEHOREN 1/8'' :

Moer voor sproeikop 1/8'' SW 13

Ref. CLS.18.MT



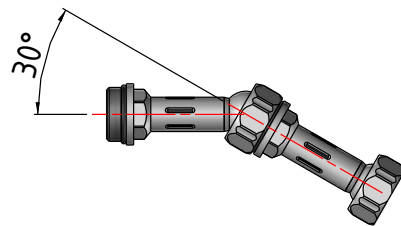
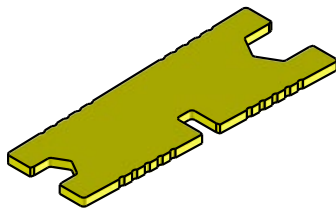
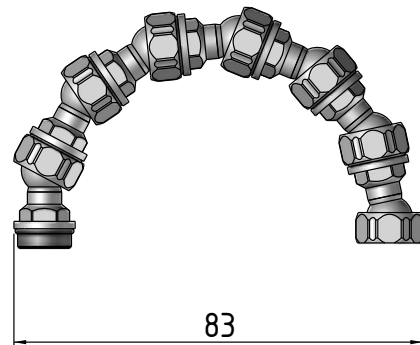
O Ring 1/8''

Ref. CLS.18.OR



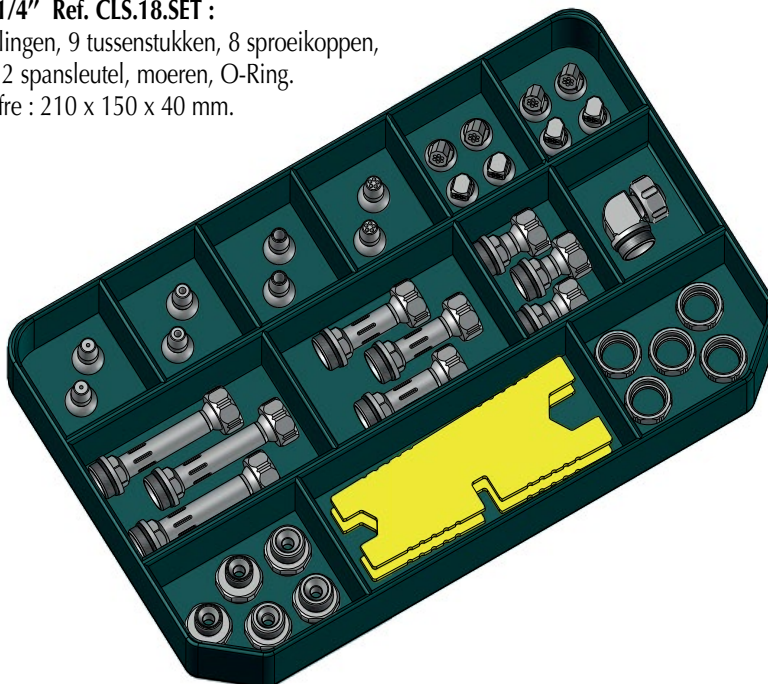
Spansleutel SW 9 / SW 13

Ref. CLS.18.SS



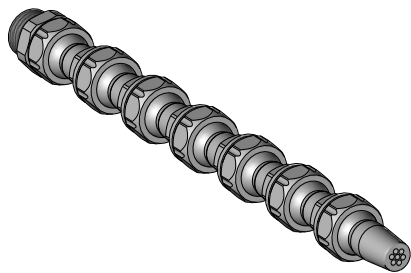
KIT COMPLET 1/4'' Ref. CLS.18.SET :

Bevat : 5 koppelingen, 9 tussenstukken, 8 sproeikoppen,
1 elleboog 90°, 2 spansleutel, moeren, O-Ring.
Dimensions coffre : 210 x 150 x 40 mm.



MODULAIRE SEGMENTSLANG HOGE DRUK UIT ALUMINIUM 1/4 ''

CLS.14



Lichte koelingflexibel uit geëloxeerde aluminium voor koelvloeistoffen of lucht.
Voor werkdruk **tot 80 bar** .

Doorlaat : Ø 5,5mm.

Spankoppel : 2,5 - 3Nm.

Sterke onbuigzaamheid, door alle componenten op te spannen voor een precieze straal.
Interessant voor warme spanen of lange lusspanen.

KOPPELING 1/4'':

Koppeling G 1/8''

Koppeling R 1/8''

Koppeling R 1/8'', lang

Koppeling NPT 1/8''

Koppeling G 1/4''

Koppeling R 1/4''

Koppeling R 1/4'', lang

Koppeling NPT 1/4''

Metrische koppeling M8 x 1,25

Metrische koppeling M8 x 1,25, lang

Metrische koppeling M10 x 1,5

Metrische koppeling M10 x 1

Metrische koppeling M12 x 1

Ref. CLS.14.GA.G.18

Ref. CLS.14.GA.R.18

Ref. CLS.14.GA.R.18.L

Ref. CLS.14.GA.N.18

Ref. CLS.14.GA.G.14

Ref. CLS.14.GA.R.14

Ref. CLS.14.GA.14.L

Ref. CLS.14.GA.N.14

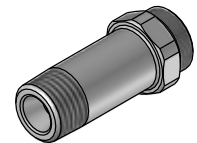
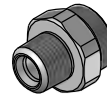
Ref. CLS.14.GA.M.08

Ref. CLS.14.GA.M.08.L

Ref. CLS.14.GA.M.10

Ref. CLS.14.GA.M.10.F

Ref. CLS.14.GA.M.12.F

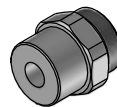


Ruwe koppeling

Ref. CLS.14.GA.RW

OP AANVRAAG :

- koppeling met reductie, andere schroefdraad.



TUSSENSTUK 1/4'' :

Segment Lengte 28 mm

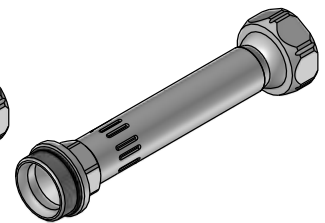
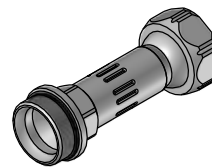
Segment Lengte 43 mm

Segment Lengte 70 mm

Ref. CLS.14.DS.28

Ref. CLS.14.DS.43

Ref. CLS.14.DS.70



RONDE RECHTE SPROEIKOP 1/4'' :

Sproeikop Ø 1,5 mm

Sproeikop Ø 3,5 mm

Sproeikop Ø 4,5 mm

Sproeikop Ø 5,5 mm

Milti-sproeikop (7 gaten Ø 1,5 mm)

Andere multi-sproeikop met gaten op aanvraag.

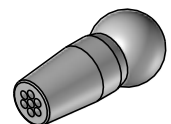
Ref. CLS.14.RD.02

Ref. CLS.1R.RD.04

Ref. CLS.14.RD.05

Ref. CLS.14.RD.06

Ref. CLS.14.RDM.07



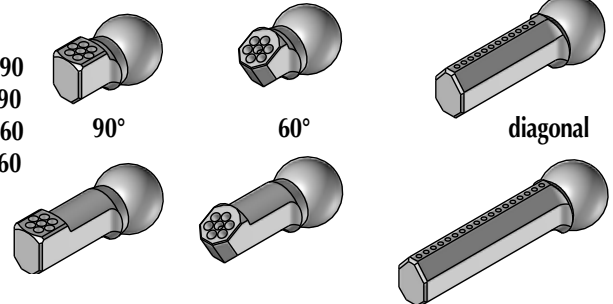
MODULAIRE SEGMENTSLANG HOGE DRUK UIT ALUMINIUM 1/4 "

CLS.14

VLAKKE MULTISPROEIKOP 1/4" - geleverd met moer Ref. CLS.14.MT :
L x B x H : 25 / 40 x 22 x 14 mm Ref. CLS.14.FDM.020

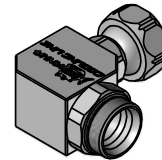


HAAKSE SPROEIKOP 1/4" : te bevestigen met moer Ref. CLS.14.MT :
Sproeikop 90° - lengte 20 mm met 7 gaten Ø 1,8 mm Ref. CLS.14.SDK.90
Sproeikop 90° - lengte 30 mm -met 7 gaten Ø 1,8 mm Ref. CLS.14.SDL.90
Sproeikop 60° - lengte 20 mm met 7 gaten Ø 1,8 mm Ref. CLS.14.SDK.60
Sproeikop 60° - lengte 30 mm met 7 gaten Ø 1,8 mm Ref. CLS.14.SDL.60

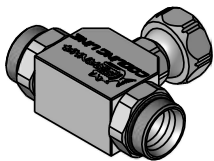


VERBINDINGSTUK 1/4" - afleidingen in 1/4" :
Elleboog – 1 uitgang 90°
Viekante verdeler– 3 uitgangen 90°
T-Verdeler – 2 uitgangen 180°
Y-Verdeler– 2 uitgangen 90°

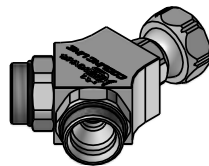
Ref. CLS.14.VS.L
Ref. CLS.14.VS.Q
Ref. CLS.14.VS.T
Ref. CLS.14.VS.Y



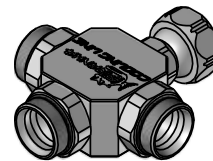
L



T



Y



Q

TOEBEHOREN 1/4" :
Moer voor sproeikop1/4" SW 16 Ref. CLS.14.MT



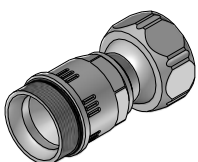
Deksel SW 16 Ref. CLS.14.DS



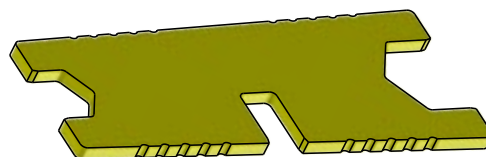
O Ring 1/4" Ref. CLS.14.OR



Vanne anti-retour Ref. CLS.14.RV



Vlakke spansleutel SW 11 / SW 16 Ref. CLS.14.SS

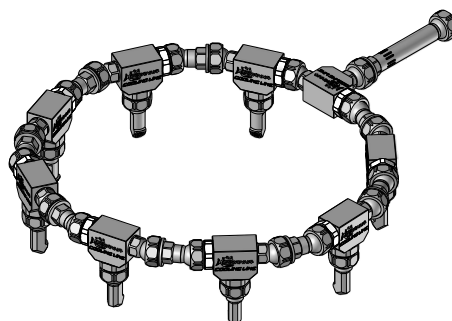
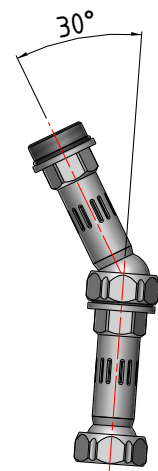
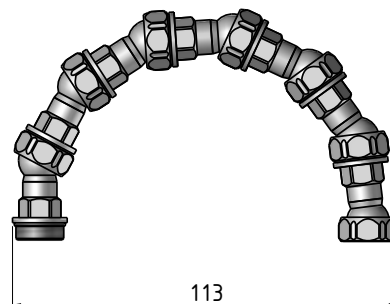
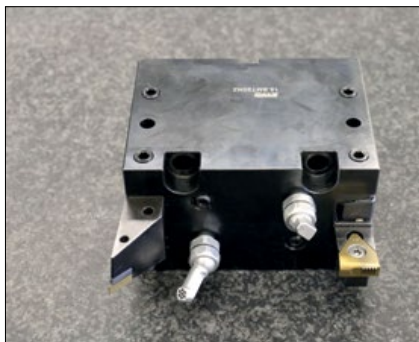


Kraan in lijn Ref. CLS.14.KH



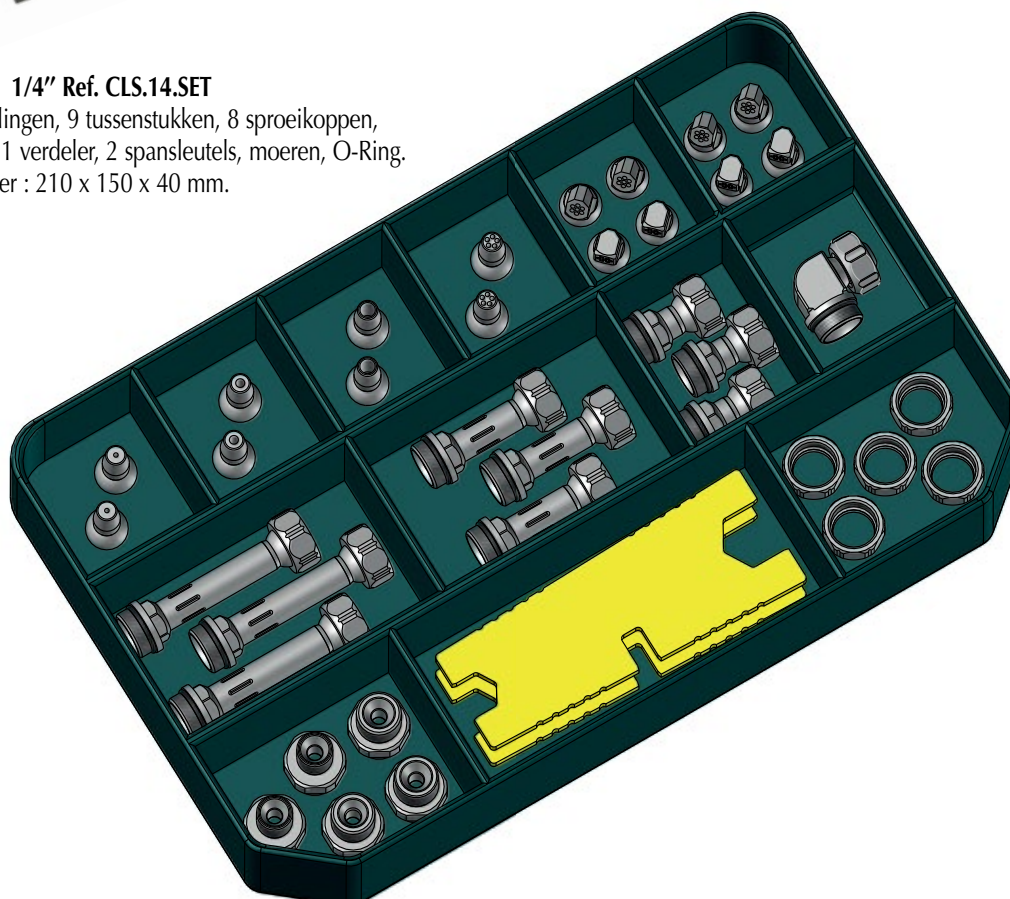
MODULAIRE SEGMENTSLANG HOGE DRUK UIT ALUMINIUM 1/4 ''

CLS.14



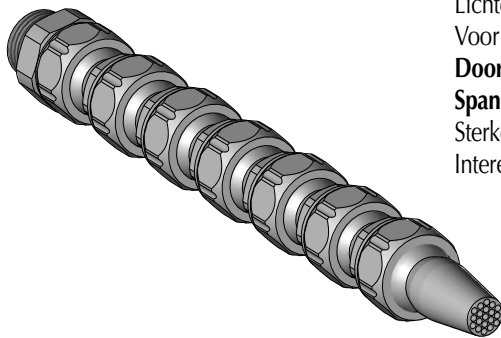
COMPLEET KIT 1/4'' Ref. CLS.14.SET

Bevat : 5 koppelingen, 9 tussenstukken, 8 sproeikoppen,
1 elleboog 90°, 1 verdeler, 2 spansleutels, moeren, O-Ring.
Afmetingen koffer : 210 x 150 x 40 mm.



MODULAIRE SEGMENTSLANG HOGE DRUK UIT ALUMINIUM 1/2 "

CLS.12



Lichte koelingflexibel uit geëloxeerde aluminium voor koelvloeistoffen of lucht.
Voor werkdruk **tot 80 bar** .

Doorlaat : Ø 12 mm.

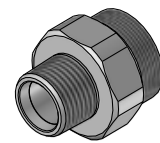
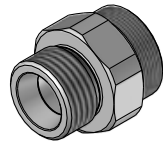
Spankoppel : 5 – 7,5 Nm.

Sterke onbuigzaamheid, door alle componenten op te spannen voor een precieze straal.
Interessant voor warme spanen of lange lusspanen.

KOPPELING 1/2":

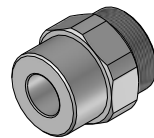
- Koppeling G 3/8"
- Koppeling R 3/8"
- Koppeling NPT 3/8"
- Koppeling G 1/2"
- Koppeling R 1/2"
- Koppeling NPT 1/2"

- Ref. CLS.12.GA.G.38
- Ref. CLS.12.GA.R.38
- Ref. CLS.12.GA.N.38
- Ref. CLS.12.GA.G.12
- Ref. CLS.12.GA.R.12
- Ref. CLS.12.GA.N.12



Ruwe koppeling

Ref. CLS.12.GA.RW



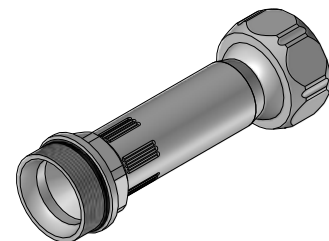
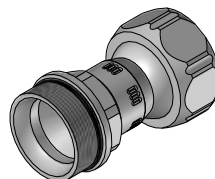
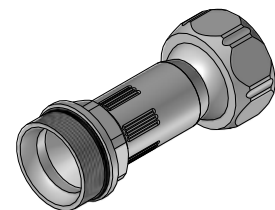
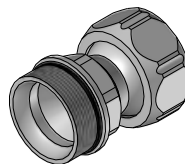
OP AANVRAAG:

koppeling met reductie, andere schroefdraad

TUSSENSTUKKEN 1/2" :

- Segment L = 38 mm
- Segment L = 46,5 mm
- Segment L = 63,5 mm
- Segment L = 80 mm

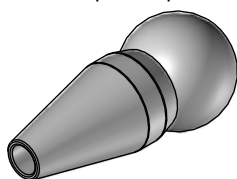
- Ref. CLS.12.DS.38
- Ref. CLS.12.DS.46
- Ref. CLS.12.DS.63
- Ref. CLS.12.DS.80



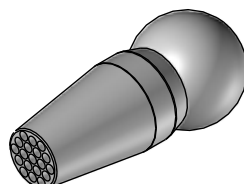
RONDE RECHTE SPROEIKOP 1/2" - te bevestigen met moer Ref.CLS.12.MT :

- Ronde sproeikop Ø 6 mm
- Ronde sproeikop Ø 8 mm
- Ronde sproeikop Ø 10 mm
- Ronde multi sproeikop 19 x Ø 2 mm

- Ref. CLS.12.RD.06
- Ref. CLS.12.RD.08
- Ref. CLS.12.RD.10
- Ref. CLS.12.RDM.19



6 / 8 / 10



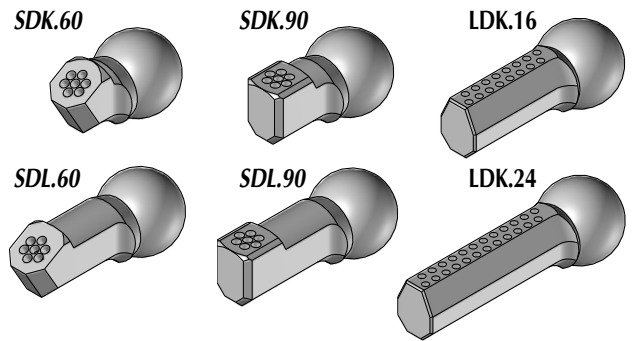
19

MODULAIRE SEGMENTSLANG HOGE DRUK UIT ALUMINIUM 1/2 "

CLS.12

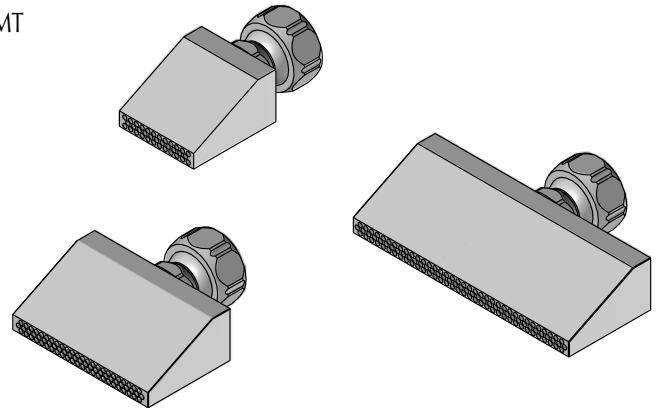
RONDE MULTI SPROEIKOP – te bevestigen met moer Ref. CLS.12.MT :

- | | |
|---|--------------------|
| Ronde sproeikop 60°, lengte 35 mm | Ref. CLS.12.SDK.60 |
| Ronde sproeikop 60°, lengte 50 mm | Ref. CLS.12.SDL.60 |
| Ronde sproeikop 90°, lengte 35 mm | Ref. CLS.12.SDK.90 |
| Ronde sproeikop 60°, lengte 50 mm | Ref. CLS.12.SDL.90 |
| Lange diagonale sproeikop met 16 gaten Ø 2 mm | Ref. CLS.12.LDK.16 |
| Lange diagonale sproeikop met 24 gaten Ø 2 mm | Ref. CLS.12.LDK.24 |



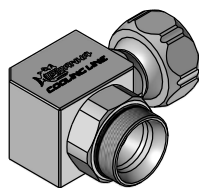
VLAKKE MULTI SPROEIKOP 1/2" - geleverd met moer Ref. CLS.12.MT

- Lengte x hoogte : 60 x 22 mm.
- | | |
|-----------------------------------|--------------------|
| Vlakke sproeikop - breedte 30 mm | Ref. CLS.12.FD.030 |
| Vlakke sproeikop - breedte 40 mm | Ref. CLS.12.FD.040 |
| Vlakke sproeikop - breedte 50 mm | Ref. CLS.12.FD.050 |
| Vlakke sproeikop - breedte 60 mm | Ref. CLS.12.FD.060 |
| Vlakke sproeikop - breedte 80 mm | Ref. CLS.12.FD.080 |
| Vlakke sproeikop - breedte 100 mm | Ref. CLS.12.FD.100 |

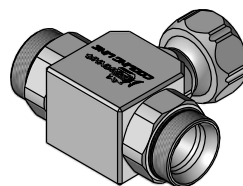


VERBINDINGSSTUK 1/2" - afleidingen 1/2" :

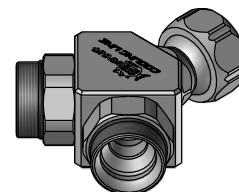
- | | |
|--|---------------------|
| Elleboog – 1 uitgang 90° | Ref. CLS.12.VS.L |
| T-Verdeler - 2 uitgangen 180° | Ref. CLS.12.VS.T |
| Y-Verdeler 90° - 2 uitgange 1/2" tot 1/2" | Ref. CSL.12.VS.Y.12 |
| Y-Verdeler 90° - 2 uitgangen 1/2" tot 1/4" | Ref. CSL.12.VS.Y.14 |



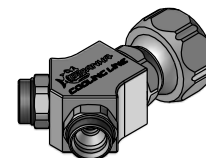
L



T



Y.12



Y.14



MODULAIRE SEGMENTSLANG HOGE DRUK UIT ALUMINIUM 1/2 "

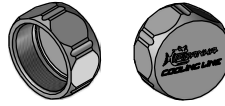
CLS.12

TOEBEHOREN 1/2" :

Moer 1/2" voor sproeikop SW 27
Ref. CLS.12.MT



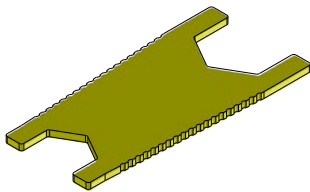
Deksel SW 27
Ref. CLS.12.DS



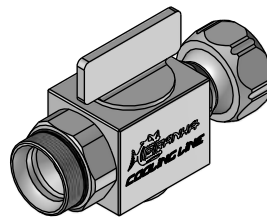
O Ring 1/2"
Ref. CLS.12.OR



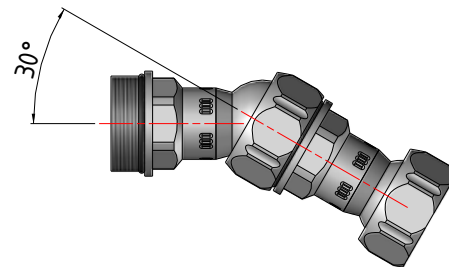
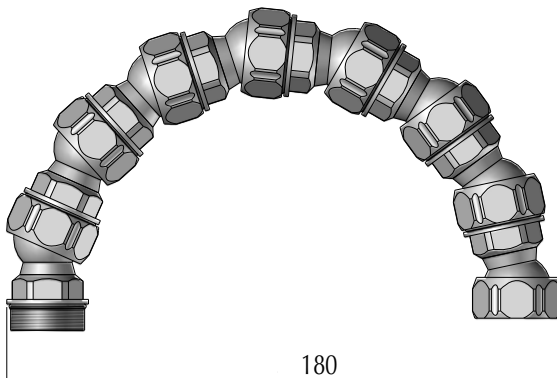
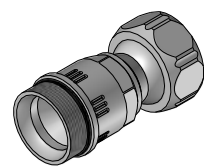
Vlakke spansleutel SW 21 / SW 27 mm
Ref. CLS.12.SS



Kraan in lijn 1/2"
Ref. CLS.12.KH



Terugslagventiel 1/2"
Ref. CLS.12.RV



COMPLEET KIT 1/2" Ref. CLS.12.SET :

Bevat : 8 koppelingen, 16 tussenstukken, 8 sproeikoppen,
1 elleboog 90°, 1 L- verdeler,
2 cspansleutels, moeren, O-Ring
Dimensions coffre : 350 x 230 x 50 mm.

